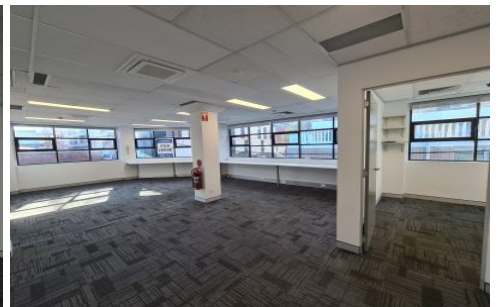
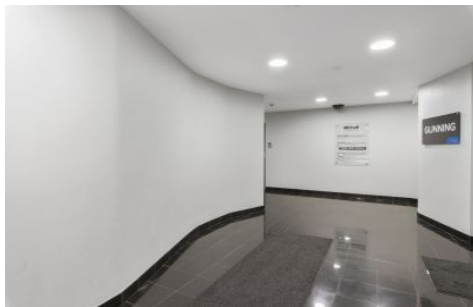


GUNNING



15 Belvoir Street Surry Hills NSW

Gunning Real Estate is pleased to offer for lease these two great spaces within Belvoir Studios, Surry Hills.

Suite 2.01& 02 - Combined is a large a spacious open plan corner office on the 2nd floor with outstanding natural light. (102sqm)

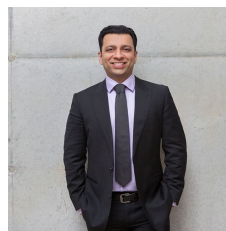
Belvoir Studios is located 400m from Central Station and the light rail, and is surrounded by terrific local amenities, including Prince Alfred Park.

Features include:

- 2 Suites can be leased together or separately.
- Great natural light throughout
- Share kitchenette
- Male & Female toilets, access to shower

Building Size : 102 sqm

View : <https://www.gunningre.com.au/lease/nsw/eastern-suburbs/surry-hills/commercial/offices/5646450>



Tushar Bakshi
02 9698 0222



Daniel Gunning
02 9698 0222