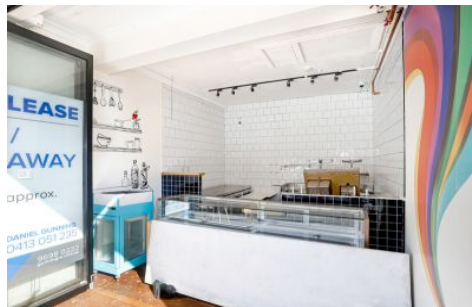


# GUNNING



## Shops 1&2/259 Crown Street Surry Hills NSW

Strategically located on the corner of Crown and Goulburn Street:

Features:

- Ground floor Shops
- Excellent location with street exposure
- Close proximity to Oxford Street and restaurants
- Suitable for a wide range of uses (STCA) including hospitality

For more information or to inspect, please contact the agents.

**Building Size** : 95 sqm  
**Land Size** : 95 sqm  
**View** : <https://www.gunningre.com.au/lease/nsw/eastern-suburbs/surry-hills/commercial/retail/5728591>

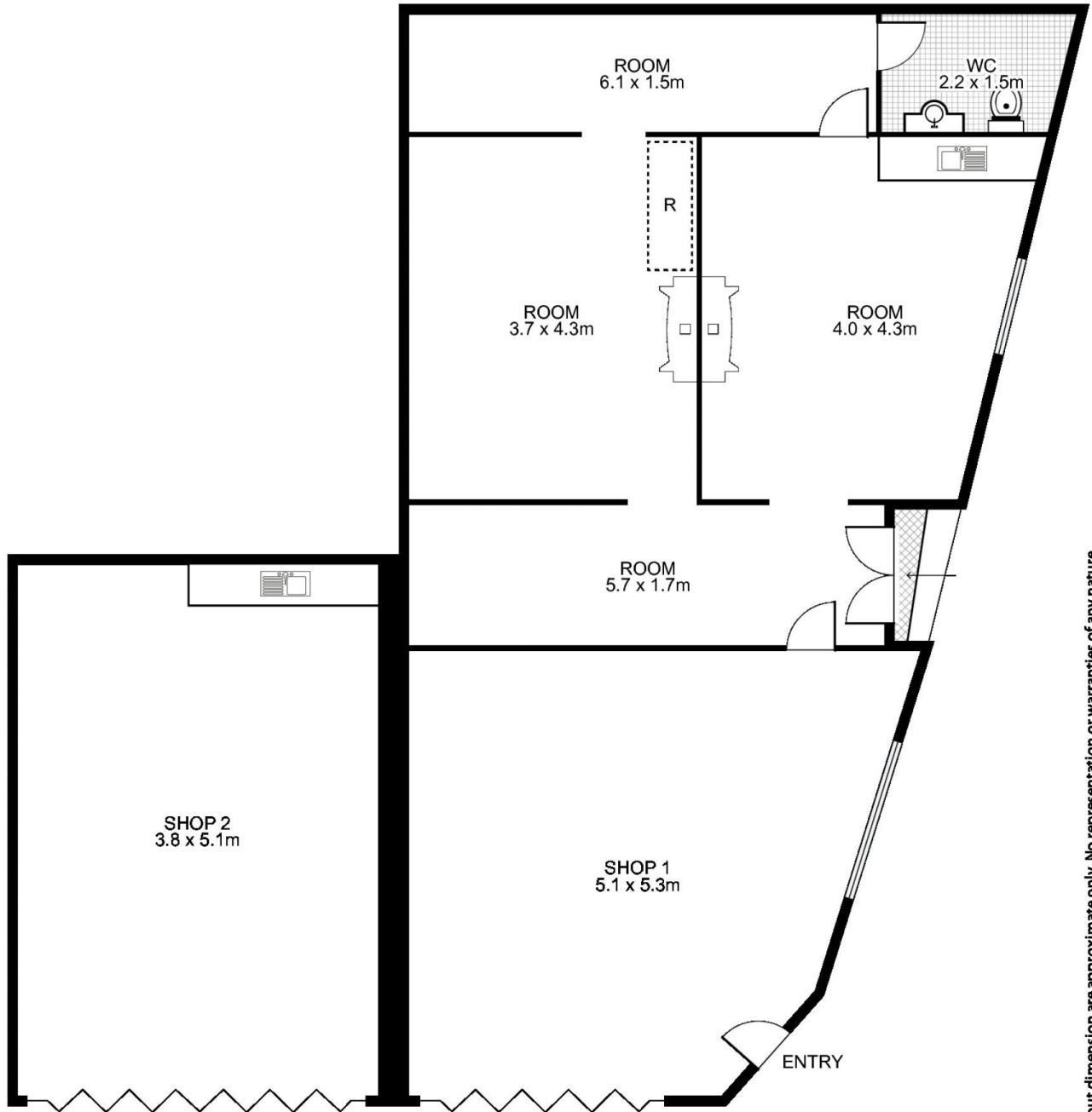


**Tushar Bakshi**  
02 9698 0222



**Daniel Gunning**  
02 9698 0222

## Shop 1 & 2 / 259 Crown Street, SURRY HILLS



Approx. Shop 1 Area : 76m<sup>2</sup>

Shop 2 Area : 19m<sup>2</sup>

Total Area : 95m<sup>2</sup>

# GUNNING



**NORTH**

This floor plan is intended as a guide only. Layout dimension are approximate only. No representation or warranties of any nature whatsoever are given or intended. Any person using this information should rely on their own enquiries.