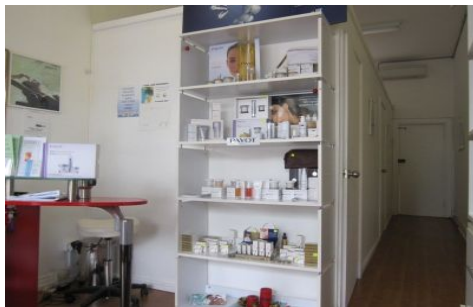


GUNNING



Mosman

Currently operating as a 'Beauty Salon' the shop is positioned on Spit Road near the corner of Awaba Road approximately 1km from Spit Junction town centre of the intersection of Military Road.

Total Shop Area: 26sqm

Current Annual Gross Rent: \$19,353.60 plus GST

Estimated Outgoings: \$3,200pa

For more information or to inspect the property please don't hesitate to contact the undersigned.

Charles Loveridge
P: 02 9698 0222
M: 0421 311 112

Building Size : 26 sqm
Land Size : 26 sqm
View : <https://www.gunningre.com.au/sale/nsw/north-shore-lower/mosman/commercial/retail/5730014>