

# GUNNING



## 53/187 Macquarie Street Sydney NSW

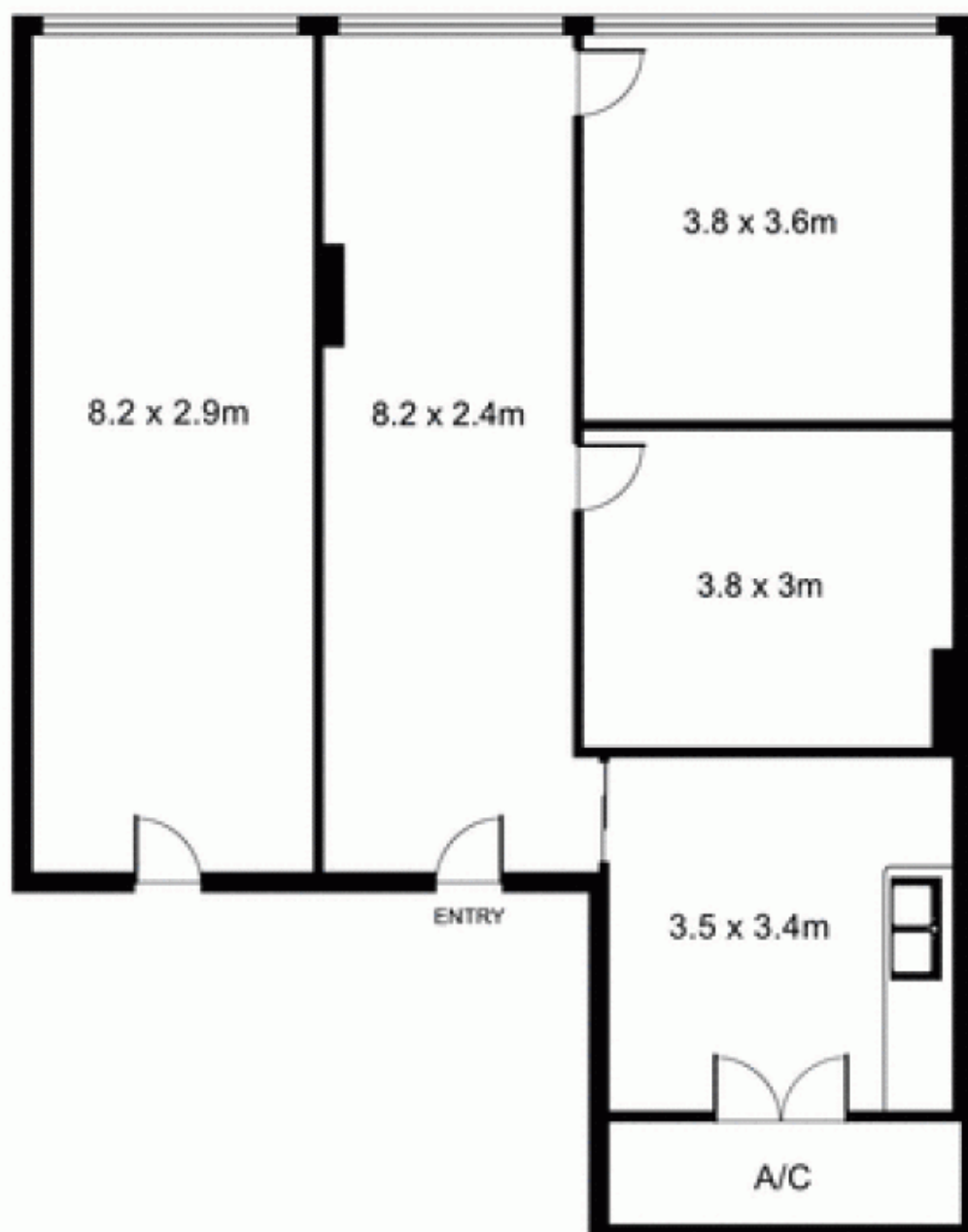
Gunning commercial is proud and excited to announce the upcoming Auction of this stunning commercial suite located on level 12 of the prestigious Park House at 187 Macquarie Street, Sydney.

Park House is located in the heart of the Macquarie Street medical precinct and is also in extreme proximity to the Supreme Court of New South Wales. Park House is surrounded by iconic heritage buildings such as Parliament House, the State Library of New South Wales, The Sydney Mint and the Reserve Bank of Australia.

The suite features uninterrupted panoramic views of Sydney Harbour stretching from the iconic Sydney Opera House all the way out to the Heads. The suite also overlooks the Royal Botanic Gardens including Government House and the Sydney Conservatorium of

**Building Size** : 71 sqm  
**Land Size** : 71 sqm  
**View** : <https://www.gunningre.com.au/sale/nsw/sydney-city/sydney/commercial/healthcare/5730099>

**53/187 Macquarie St,  
SYDNEY**



Plans by  
**surroundpix**  
from.au  
1300 30 32 40

This floor plan is intended as a guide only. Layout dimensions are approximate only. No representations or warranties of any nature whatsoever are given or intended. Any person using this information should rely on their own enquiries.