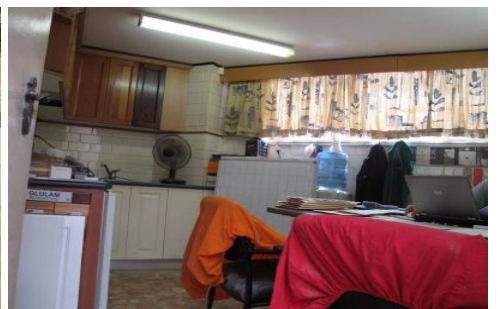


GUNNING



7/23 Garema Circuit KINGSGROVE NSW

Style:

Open plan factory with office, kitchenette, 2 bathrooms and shower facility.

Location:

Conveniently located at the front of the complex.
Easy access to on and off ramps to the M5 Motorway.
Excellent surrounding transport infrastructure

Features:

- * 3 car spaces
- * High internal clearance for container access
- * On site cafe

For more information, or to inspect the property, please call:

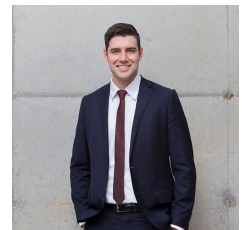
Building Size : 178 sqm

Land Size : 178 sqm

View : <https://www.gunningre.com.au/sale/nsw/st-george/kingsgrove/commercial/industrial/5730531>



Malcolm Gunning
(02) 9310 9211



James McKenny
(02) 9310 9208