

# GUNNING



## 29 Challis Avenue Potts Point NSW

Saraville is an ornate Victorian Italianate terrace that's one of only 12 houses that are freestanding in Potts Point. Built circa 1883 and occupying a dual street fronted block in a prime lifestyle-location that will never go out of fashion, the property is ideal for a multitude of uses. Sensitively contemporised yet retaining its architectural integrity and many original period features, Saraville is a blue chip opportunity for your corporate headquarters, consulting suites, showroom/display areas, restaurant/bistro/bar area, or perhaps even a private home + office (STCA).

One of the only heritage listed buildings in Potts Point with contemporary open plan interiors, Saraville features an intelligent 3-storey redesign by leading architects Conybeare Morrison. Prime positioned in a broad tree-lined avenue flanked by a mix of grand Victorian terrace-houses, 20th century apartment buildings and trendy cafes, 29

**Building Size** : 461.6 sqm  
**Land Size** : 347.7 sqm  
**View** : <https://www.gunningre.com.au/sale/nsw/eastern-suburbs/potts-point/commercial/offices/5730733>



Roof

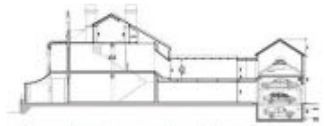


First floor



Ground floor

1:100  
SCALE



Cross section showing approved car stables and additional 44sqm office area above the garage

## 29/Challis Ave POTTS POINT

### LIVE / SHOP / WORK / PLAY

Extraordinary freestanding terrace with unique potential for home, corporate headquarters, showroom and/or restaurant/bar STCA.

Disclaimer: This plan has been prepared for marketing purposes only. Intended parties should undertake their own enquiries as to the accuracy of the information. Areas are approximate and dimension rounding may result in area discrepancies.