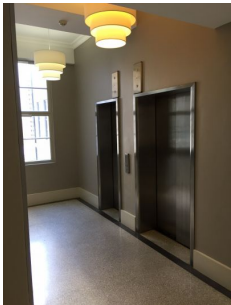


GUNNING



Level 10/250 Pitt Street Sydney NSW

The building is situated at 250 Pitt Street in between Park and Market streets, surrounded by Sydney's prime retail attractions including the Galleries Victoria, Pitt Street Mall & Sydney's Westfield. It is very close to bus & rail interchanges at Town Hall Station & the Queen Victoria Building.

Being certainly one of the best small suites in the midtown precinct, this great little suite located on level 10 offers great light and aspect.

Main features:

- 17sqm;
- high windows;
- Fabulous natural light;
- Overlooks Sydney's town hall;

Building Size : 17 sqm
Land Size : 17 sqm
View : <https://www.gunningre.com.au/sale/nsw/sydney-city/sydney/commercial/offices/5730918>