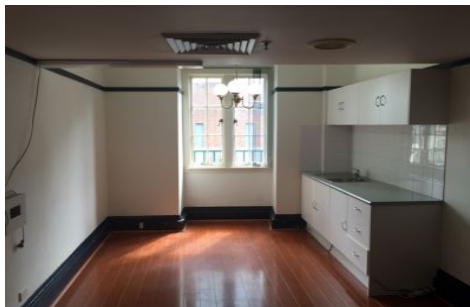
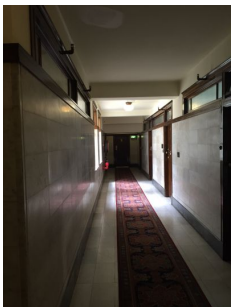


GUNNING



Level 10/155 King Street Sydney NSW

This elegant commercial suite is located in the "Trust Building" at 155 King Street, Sydney, more precisely at the corner with Castlereagh Street.

Well-known for being the home of the Westpac Bank flagship branch for many years, this heritage building inspired elegance and offers a central location in the CBD close to St James Station, Martin Place but also a direct proximity with the Supreme court, Martin Place and Hyde Park, MLC shopping centre as well as Pitt Street Mall.

Type	: Offices
Building Size	: 23 sqm
Land Size	: 23 sqm
View	: https://www.gunningre.com.au/lease/nsw/sydney-city/sydney/commercial/offices/5730954

Property features:

- Level 10

[For full version visit the website](#)