

# GUNNING



## 102/410 Elizabeth Street Surry Hills NSW

Situated in the heart of Surry Hills, 410 Elizabeth Street is in one of Sydney's most exciting and convenient locations on the doorstep of the CBD.

410 Elizabeth Street is located within 300 meters of Central Station the main hub for Sydney's rail network and is also on a variety of bus routes.

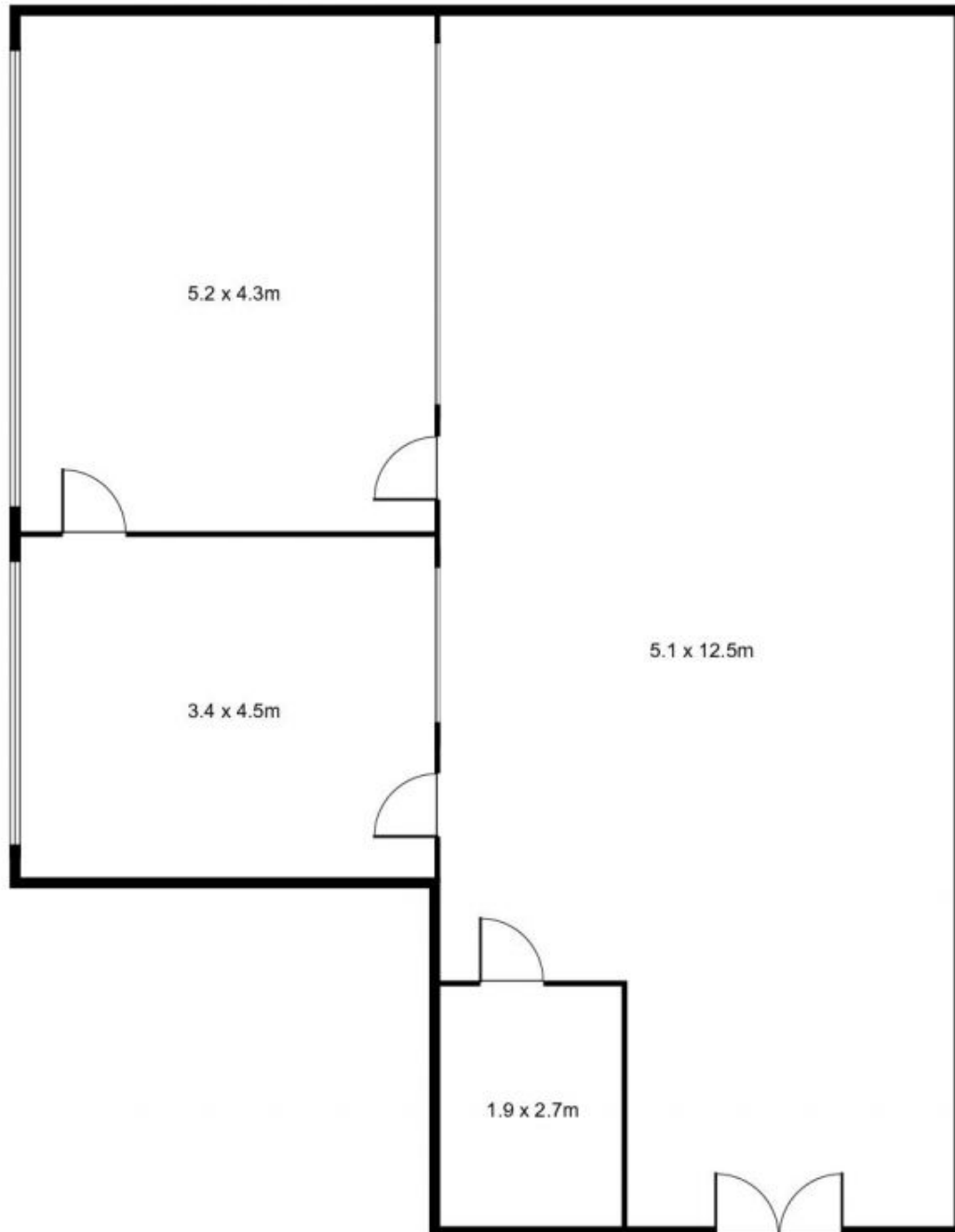
### KEY FEATURES

- \* For Lease
- \* 101sqm
- \* Available now

Romain Saussey  
M: 0423 670 815  
D: 02 9310 9206

**Building Size** : 101 sqm  
**Land Size** : 101 sqm  
**View** : <https://www.gunningre.com.au/lease/nsw/eastern-suburbs/surry-hills/commercial/offices/5730994>

**Suite 102/ 410 Elizabeth Street,  
SURRY HILLS**



**GUNNING**



This floor plan is intended as a guide only. Layout dimension are approximate only. No representation or warranties of any nature whatsoever are given or intended. Any person using this information should rely on their own enquiries.