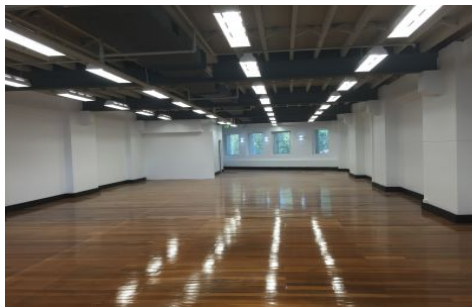
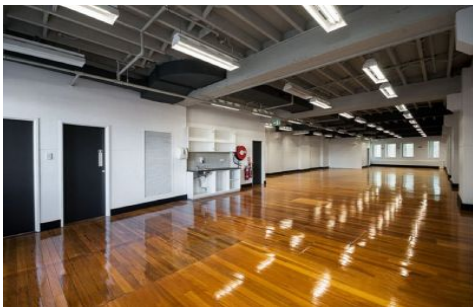


GUNNING



Level 1/67-69 Regent Street Chippendale NSW

Stylish, elegant and Creative.

Highly creative, hugely open plan space including polished timber flooring, rushing natural light and CAT 5 cabling though out.

- 256 sqm on Level 1
- Strategic location - Central Station
- One big open plan
- Internal Male and female toilets
- Abundant natural light
- New internal Kitchenette Facilities

Other Features:

- Lift Access
- Central Location
- Timber floor

Building Size : 256 sqm

View : <https://www.gunningre.com.au/lease/nsw/sydney-city/chippendale/commercial/offices/5730999>