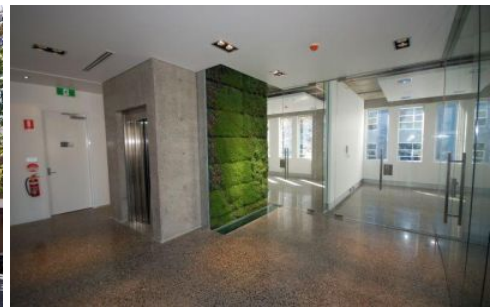


GUNNING



441-449 Elizabeth Street Street Surry Hills NSW

Fully renovated office spaces in a commercial boutique building.

This property is located at the busy corner of Elizabeth and Devonshire Streets, next to cafes and restaurants and less than 100 meters away from Central Station. This is the perfect location!

441-449 Elizabeth Street is a building of character and is in hot demand from a variety of commercial users.

The level 2 offers the possibility to merge two or three office spaces to create a unique corner suite with a double exposure on Devonshire and Elizabeth Street.

This property would suit a range of professional operations, including creative agencies, PR and marketing firms, or as

Building Size : 120 sqm
Land Size : 120 sqm
View : <https://www.gunningre.com.au/lease/nsw/eastern-suburbs/surry-hills/commercial/offices/5731009>