

GUNNING



Level 8/3 Carlton Street Chippendale NSW

2  2  1 

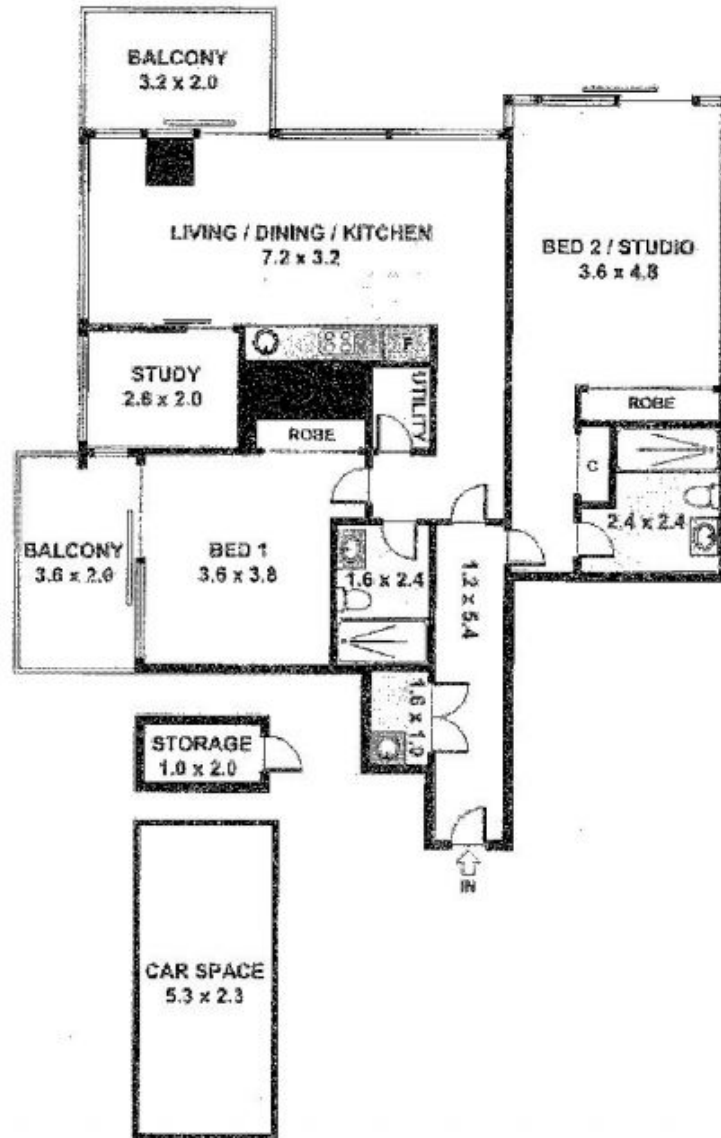
From the Council on Tall Buildings and Urban Habitat, 'Central Park' has recently been awarded 'Best tall building in the world' following 'Best tall building in Australia & Australasia' amongst previous prestigious milestones, this spectacular apartment located in the thriving and quickly evolving Inner Sydney is sure to impress home buyers and investors alike.

Aside from the high quality and impressive finishes of this apartment, location highlights include the close proximity to Sydney University, Ultimo TAFE and UTS, Central Train Station, gallery spaces, restaurants & boutique shopping, with more than 30,000sqm of surrounding park and public spaces.

- Spacious dual key layout with 2 bedrooms plus study, 2 bathrooms

Building Size : 125 sqm
View : <https://www.gunningre.com.au/lease/nsw/sydney-city/chippendale/residential/apartment/5731040>

E812/3 Carlton, Chippendale



Please note: All stated dimensions are approximate only. Particulars given are for general information only and do not constitute any representation on the part of the vendor or agent.