

# GUNNING



## 3 Carlton Street Chippendale NSW

1 1

### Studio Apartment

Located at Central Park Chippendale, A fabulous smart building with advanced technologies, 24 hour concierge, modern and sustainable living plans,, fully equipped gymnasium, an elevated outdoor pool, large park and steps to the brand new shopping complex including fashion retail outlets, Woolworths, cafes and eateries.

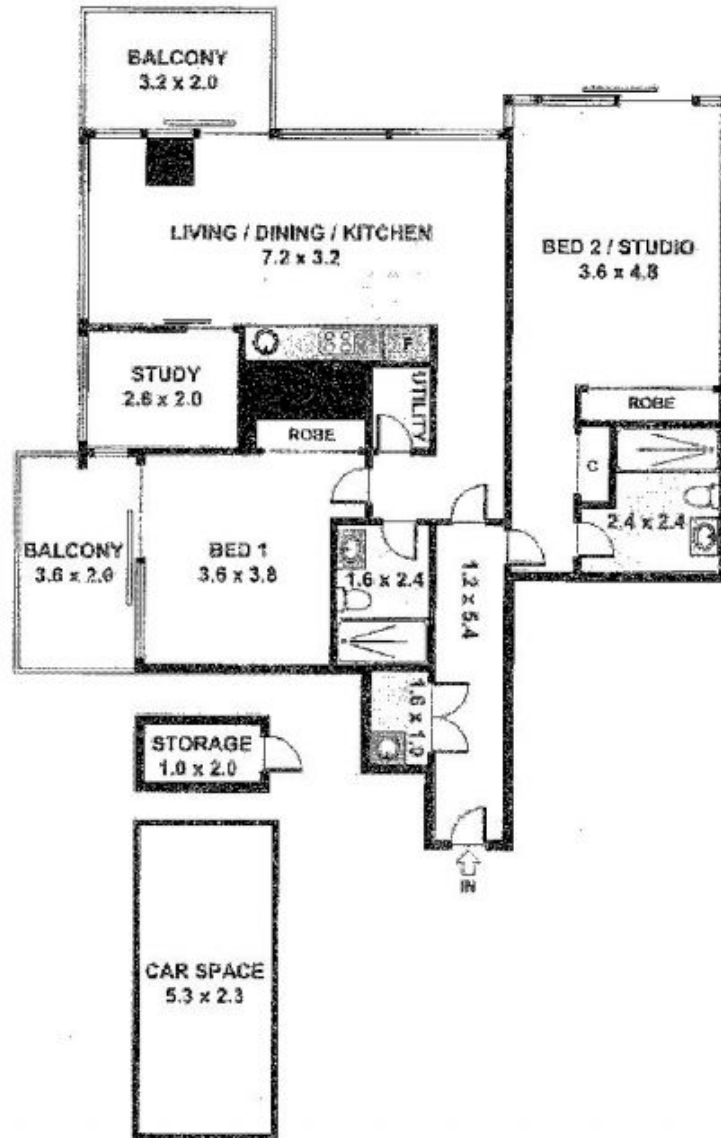
A stroll to Central station, buses and Universities Central Park is the ultimate lifestyle precinct.

The apartment has

- Ducted air conditioning
- Shared washer/dryer included
- The latest bathroom fittings and design
- All electricity/gas and water included

**Building Size** : 125 sqm  
**View** : <https://www.gunningre.com.au/lease/nsw/sydney-city/chippendale/residential/apartment/5731042>

# E812/3 Carlton, Chippendale



Please note: All stated dimensions are approximate only. Particulars given are for general information only and do not constitute any representation on the part of the vendor or agent.