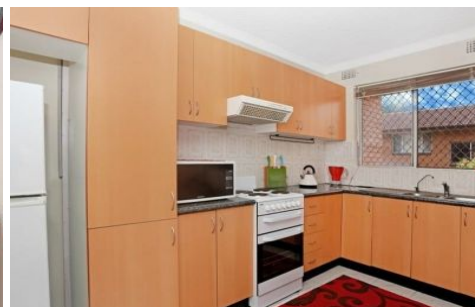


GUNNING



4/24-26 Sheffield Street MERRYLANDS NSW

2  **1**  **1** 

- * Delightful Ground Floor Unit
- * 2 Bedrooms
- * Separate Lounge
- * High Ceilings
- * Security Intercom
- * 71m (inc Balcony)
- * Security Undercover Parking
- * South Facing Balcony
- * 400 Metres (Approx) to Holroyd Gardens Park
- * \$750 Metres (Approx) to Merrylands Station & Stockland Mall

View : <https://www.gunningre.com.au/lease/nsw/parramatta/merrylands/residential/apartment/5731078>