

# GUNNING



## 812/3 Carlton Street CHIPPENDALE NSW

1  1 

One Bedroom + Study apartment with parking unit 812

Located at Central Park Chippendale, A fabulous smart building with advanced technologies, 24 hour concierge, modern and sustainable living plans,, fully equipped gymnasium, an elevated outdoor pool, large park and steps to the brand new shopping complex including fashion retail outlets, Woolworths, cafes and eateries.

A stroll to Central station, buses and UniversitiesThe Mark is the ultimate lifestyle precinct.

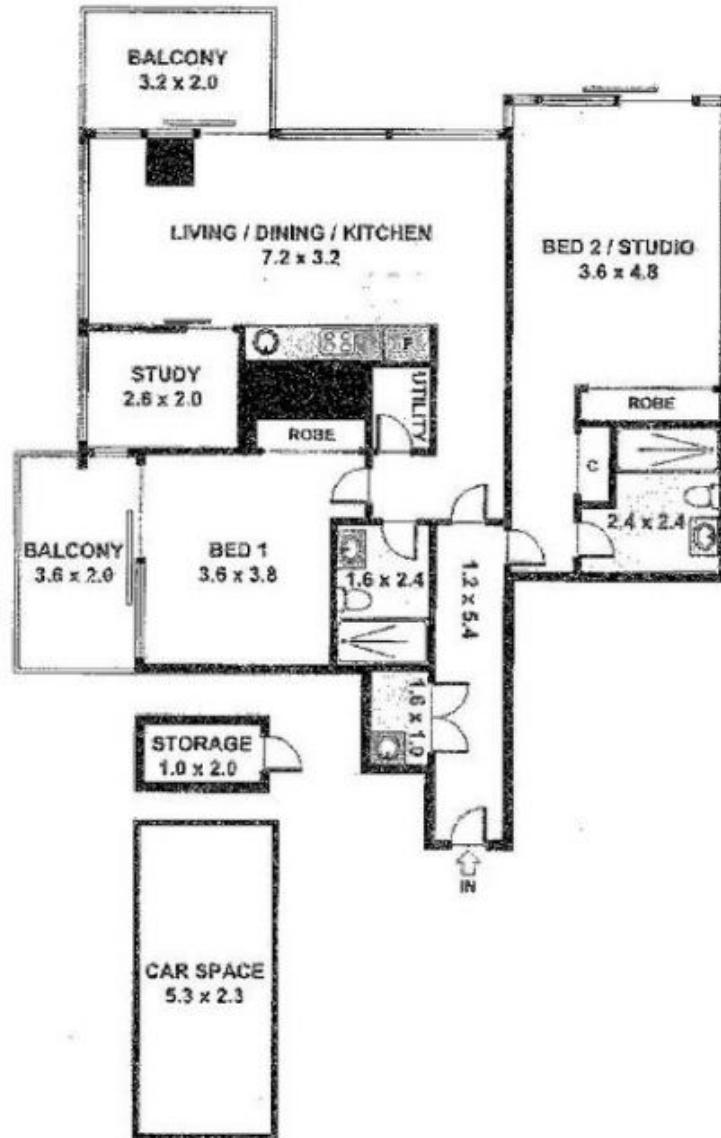
This dual key apartment has

- Ducted air conditioning
- Loggia for indoor/outdoor living
- Shared washer/dryer included
- European kitchen appliances/stone bench tops

**Building Size** : 13 sqm

**View** : <https://www.gunningre.com.au/lease/nsw/sydney-city/chippendale/residential/apartment/5731085>

# E812/3 Carlton, Chippendale



Please note: All stated dimensions are approximate only. Particulars given are for general information only and do not constitute any representation on the part of the vendor or agent.