

GUNNING



49/4 Goodlet Street SURRY HILLS NSW

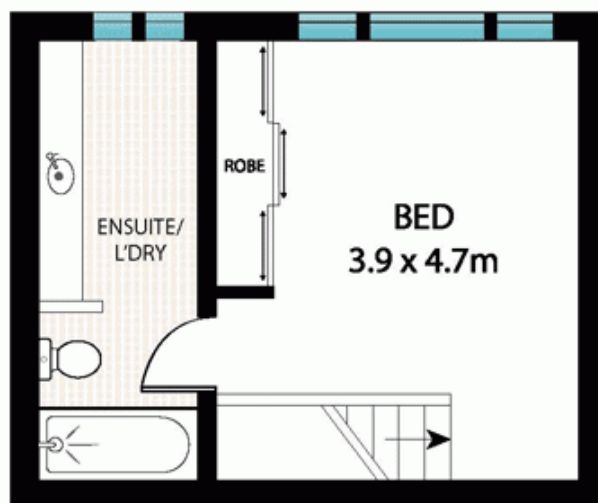
1 1

Light filled modern apartment in superbly central locale (enter via Belvoir Street)

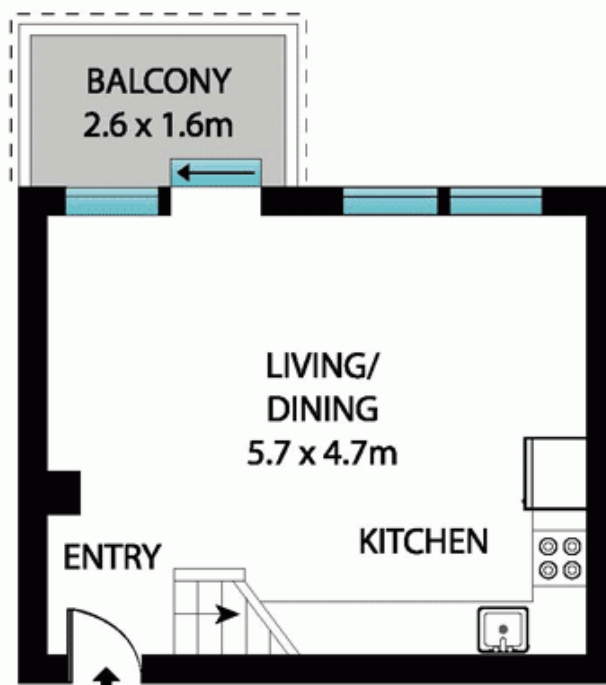
Enviably located with everything you need a stroll away, this cosy split level design top floor apartment is the perfect inner city pad. Well maintained, sunny and peacefully positioned with the entrance on Belvoir Street, it has great proximity to fashionable Bourke and Crown Streets, restaurants, cafes and shopping, with easy access to the city, buses and trains.

Top floor, with leafy district views
Double bedroom with built ins, views
Modern bathroom and laundry
Open lounge/dining and modern kitchen
Security building with lockup garage
Balcony with views

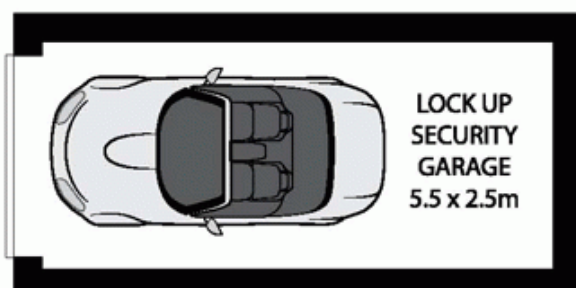
View : <https://www.gunningre.com.au/lease/nsw/eastern-suburbs/surry-hills/residential/apartment/5731087>



FIRST LEVEL



ENTRY LEVEL



GROUND LEVEL



Scale in metres, indicative only. Dimensions are approximate. All information contained herein is gathered from sources we believe to be reliable. However, we cannot guarantee its accuracy and interested persons should rely on their own enquiries.