

GUNNING



Level 3/114-120 Castlereagh Street Sydney NSW

Great value for money. Premium location, near Hyde Park and Town Hall.

This 147sqm open plan office space faces Elizabeth Street/Hyde park and has also a meeting room.

This office features:

- 147sqm on level 3
- Carpet
- Open plan + meeting room
- A/C

- windows with good natural light
- Close to train and bus stations
- Lifts installed
- Lease terms: min 2years + options

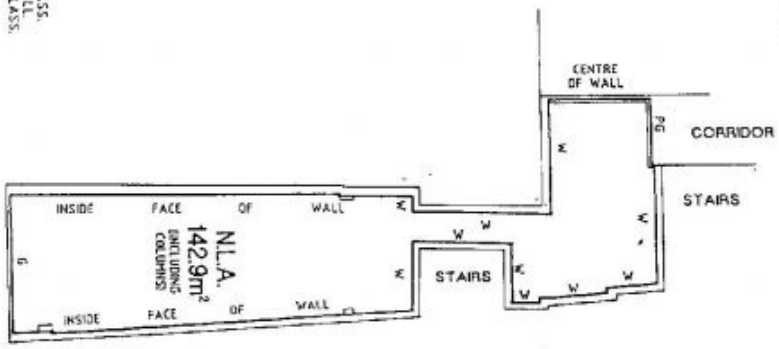
For more information or to inspect, please do not hesitate

Building Size : 147 sqm

Land Size : 147 sqm

View : <https://www.gunningre.com.au/lease/nsw/sydney-city/sydney/commercial/offices/5731126>

PLAN
 SHOWING NET LETTABLE AREA
 PART LEVEL 3
 "GEORGE BOSCH CHAMBERS"
 NO. 114-120 CASTLEREAGH STREET, SYDNEY
 CITY OF SYDNEY
 1200



ELIZABETH STREET

AREA SHOWN HEREON REPRESENTS THE NET LETTABLE
 AREA MEASURED & CALCULATED IN ACCORDANCE WITH
 THE P.C.A. METHOD OF MEASUREMENT FOR LETTABLE AREAS
 1991 REVISION

P.W. RYGATE & WEST
 SURVEYORS
 LEVEL 3
 81 YORK STREET
 SYDNEY

REF. 89385 DATE 3/6/2002

P.W. Rygate & West
 SURVEYORS