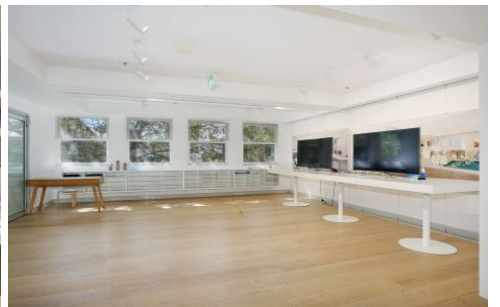


# GUNNING



## Level Whole Leve/65-67 Foveaux Street Surry Hills NSW

Gunning Real Estate is pleased to offer this magnificent creative office opportunity for lease in the iconic 65-67 Foveaux Street Surry Hills.

The property lies in the heart of the thriving Surry Hills commercial precinct and provides excellent access to Sydney buses network as well as nearby Central Railway Station.

### Property Features;

- Whole exclusive floor plate
- 400sqm floor plate
- Heritage features
- Partially fitted out
- Well presented

**Building Size** : 400 sqm

**Land Size** : 468 sqm

**View** : <https://www.gunningre.com.au/lease/nsw/eastern-suburbs/surry-hills/commercial/offices/5731137>