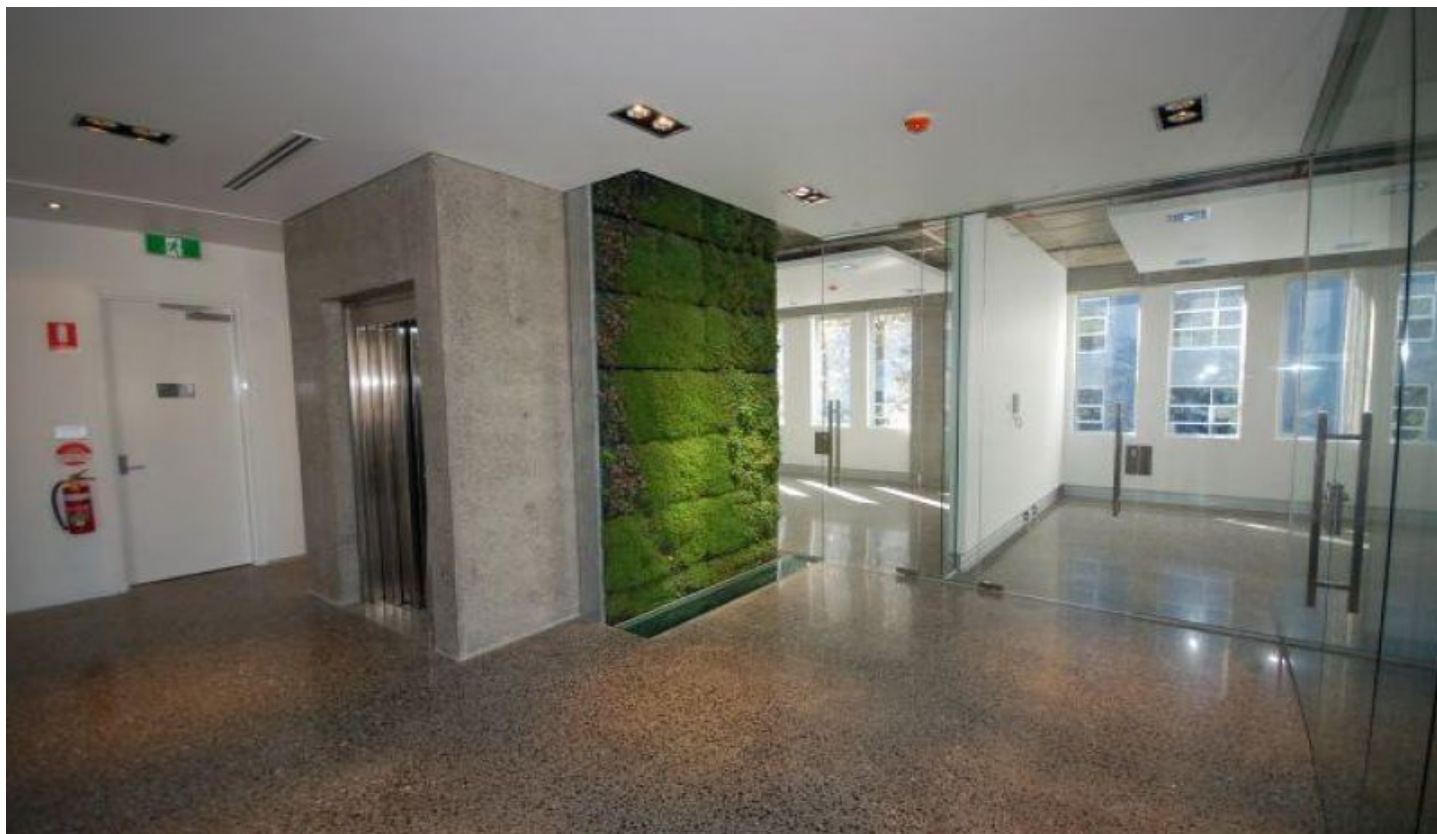


GUNNING



Level 1/102/441-449 Elizabeth Street Street Surry Hills NSW

Fully renovated office spaces in a commercial boutique building. 441-449 Elizabeth Street is a building of character and is in hot demand from a variety of commercial users.

This property is located at the busy corner of Elizabeth and Devonshire Street, next to cafes and restaurants and less than 100 meters away from Central Station. This is the perfect location!

Suits a range of professional operations, including creative agencies, PR and marketing firms, or as a head office.

Features of the property include:

- 32sqm office space
- Bright and spacious

Building Size : 32 sqm
Land Size : 32 sqm
View : <https://www.gunningre.com.au/lease/nsw/eastern-suburbs/surry-hills/commercial/offices/5731139>