

GUNNING



157 Princes Highway Arncliffe NSW

This freestanding premises situated along the Princes Highway in very close proximity to the M5 on and off ramps is built over 2 floors.

The ground level features an open plan office/showroom facing the street and to the rear; 2 partitioned offices (gyprock- can be removed if required), a kitchen and 2 toilets.

The lower ground level also features a kitchen and 2 toilets and would be suitable for storage.

KEY FEATURES

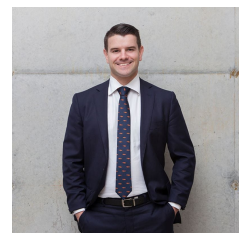
- Ground level: 120sqm*
- Lower ground: 120sqm*
- Total building area: 240sqm*
- Ample parking via side streets

Building Size : 240 sqm

View : <https://www.gunningre.com.au/lease/nsw/st-george/arncliffe/commercial/retail/5731157>

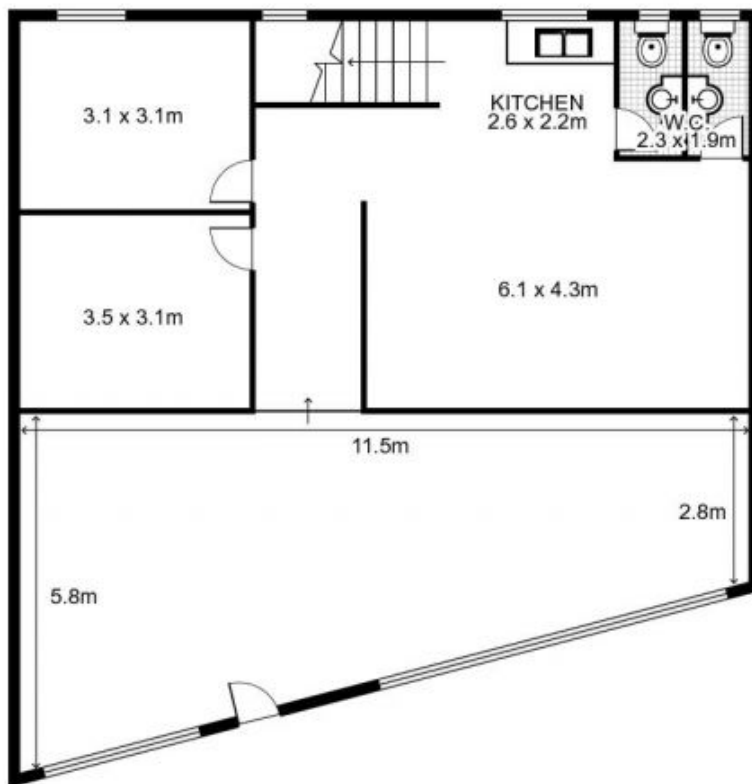
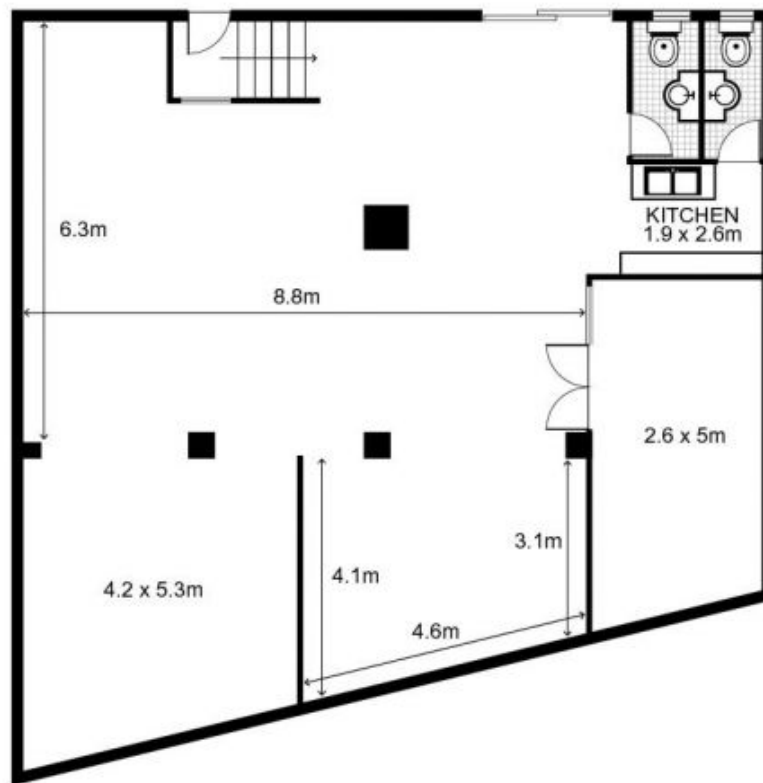


James McKenny
(02) 9310 9208



William Gunning
(02) 9310 9207

**157 Princes Highway,
ARNCLIFFE**



GUNNING



This floor plan is intended as a guide only. Layout dimension are approximate only. No representation or warranties of any nature whatsoever are given or intended. Any person using this information should rely on their own enquiries.