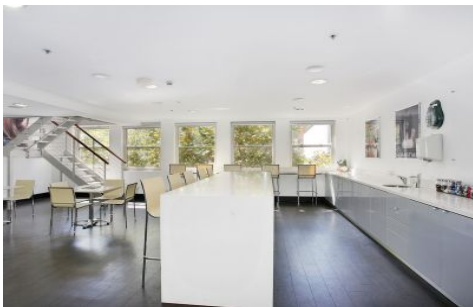


# GUNNING



## Level 2 & 3/65-67 Foveaux Street Surry Hills NSW

Gunning Real Estate is pleased to offer this magnificent creative office opportunity for lease in the iconic 65-67 Foveaux Street Surry Hills.

The property lies in the heart of the thriving Surry Hills commercial precinct and provides excellent access to Sydney buses network as well as nearby Central Railway Station.

### Property Features;

- 575sqm
- Heritage features
- Partially fitted out
- Well presented
- Competitive incentives

**Building Size** : 575 sqm  
**Land Size** : 468 sqm  
**View** : <https://www.gunningre.com.au/lease/nsw/eastern-suburbs/surry-hills/commercial/offices/5731176>