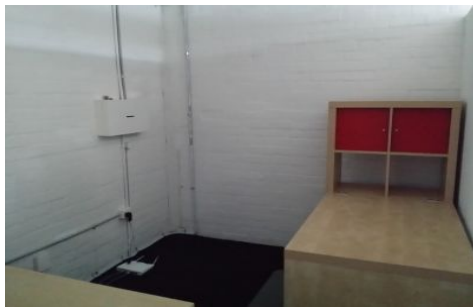


GUNNING



Engadine

FOR LEASE

A neat ground floor commercial office space set in amongst professional and retail services, centrally located to Engadine CBD. This commercial space featuring 2 rooms and large open plan main office and private kitchenette. Ideal professional suite /office and retail showroom.

The existing office fitout can be removed if you prefer an open plan.

- Modern and appealing building
- Natural light fills this bright suite
- Bus less than 50m & Train services approx. 250m
- Close to Coffee shops, supermarkets, schools, restaurants & Club Engadine
- Enjoy accessibility to major banks, post office and more.

Building Size : 42 sqm

View : <https://www.gunningre.com.au/lease/nsw/sutherland/engadine/commercial/retail/5731177>