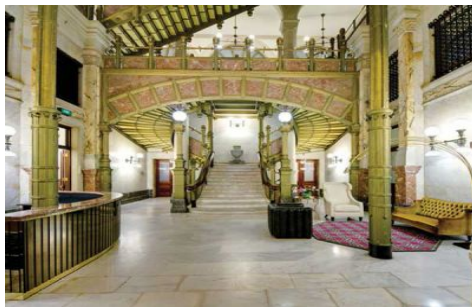
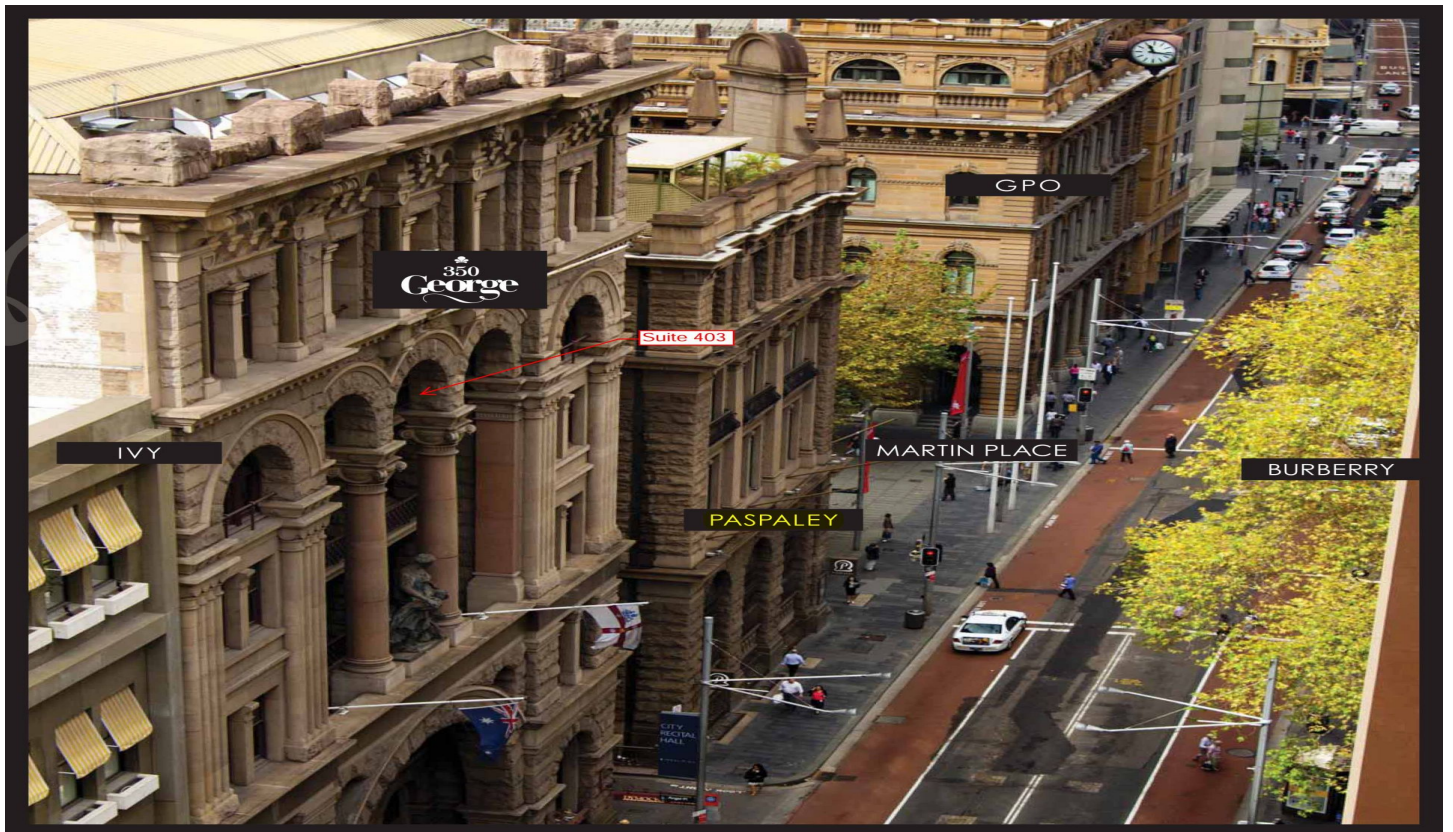


GUNNING



403/350 George Street Sydney NSW

FEATURES:

- 33sqm Office Suite
- Full security system
- Balcony
- Storage and cupboards

- Kitchenette + shared bathroom and shower on each level
- Shared meeting room
- Concierge

Building Size : 33 sqm

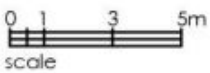
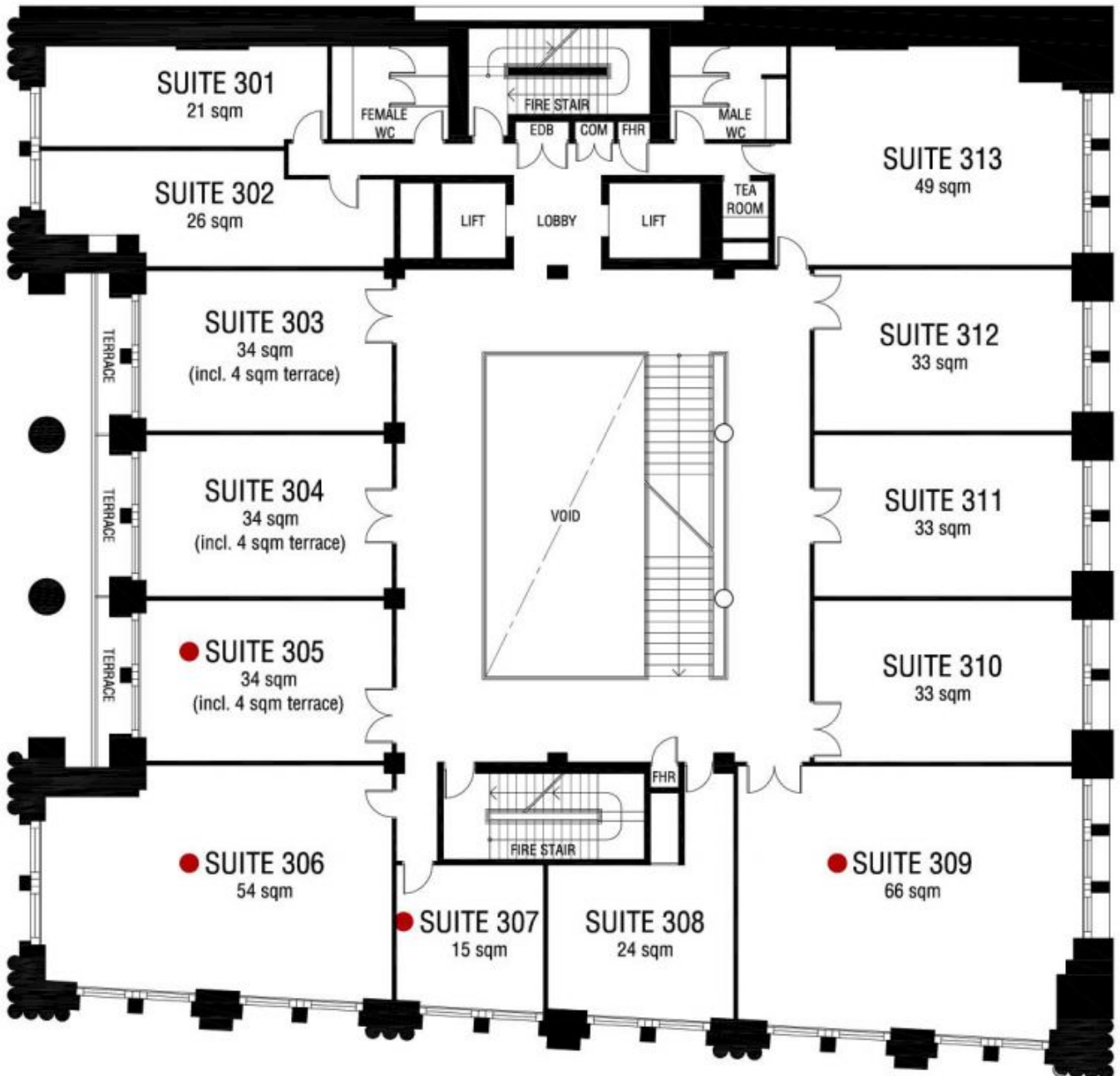
Land Size : 33 sqm

View : <https://www.gunningre.com.au/lease/nsw/sydney-city/sydney/commercial/offices/5731191>

LOCATION

'350 George' boasts a prestigious address in the heart of Sydney's CBD, adjacent to Martin Place, the GPO and within minutes of landmarks such as Circular Quay, Australia Square, Hyde Park, the QVB, King Street Wharf and The Rocks, in close proximity to Wynyard, Town Hall

350 George



LEVEL 3