

GUNNING



Level 9/263 Clarence Street Sydney NSW

1 

263 Clarence Street is a 12-storey Italian-designed office block with three lifts and basement car parking. Completed in 1976, the building is situated between the intersections of Drutt and Market Streets and is within a short walk of Town Hall Station, QVB, Darling Harbour, Hyde Park and Haymarket.

Building Size : 400 sqm
Land Size : 400 sqm
View : <https://www.gunningre.com.au/sale/nsw/sydney-city/sydney/commercial/offices/5731308>

PROPERTY:

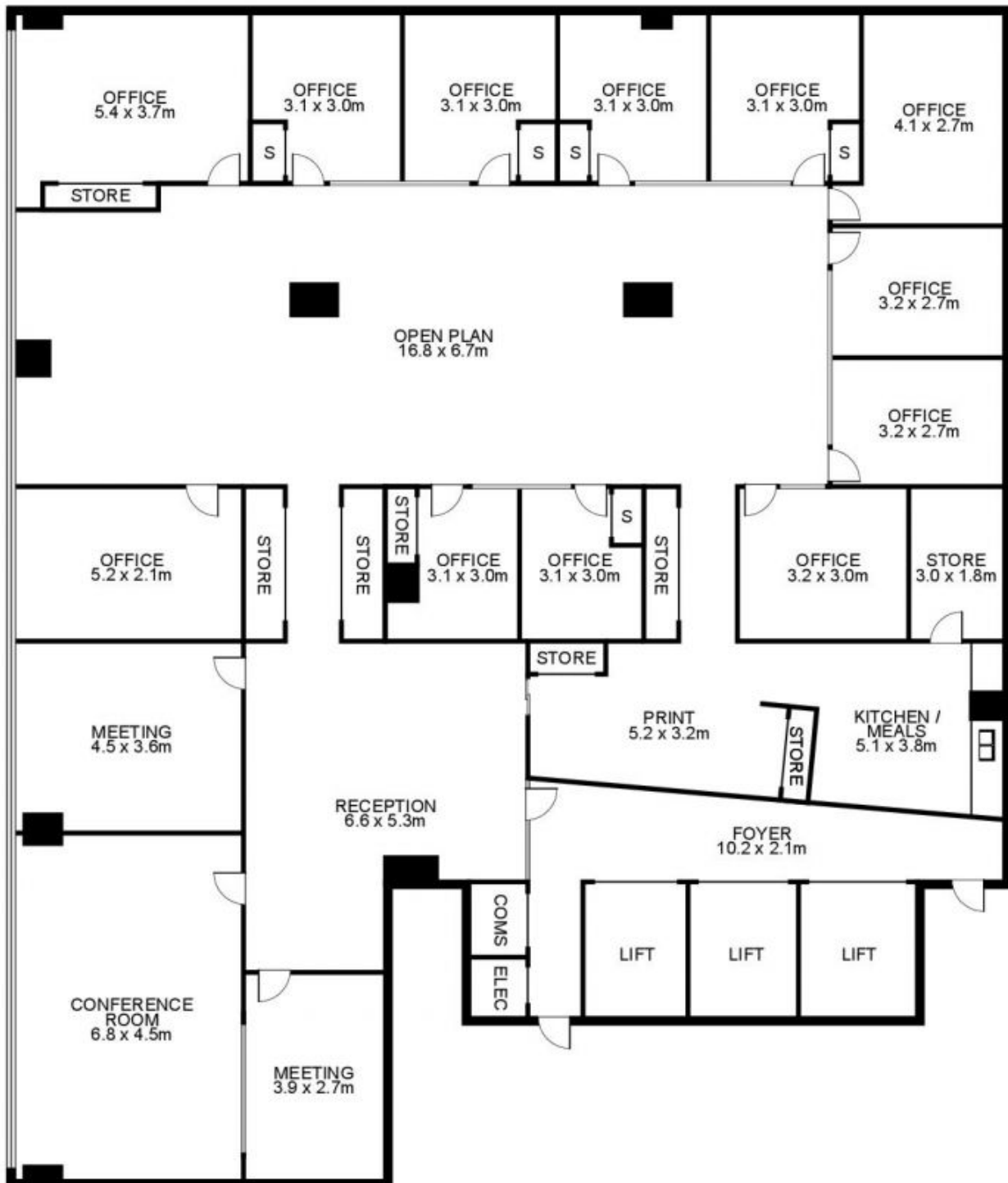
- B-grade building whole floor on level 9
- Modern and stylish CBD building
- Excellent natural light and views overlooking Clarence Street
- Ducted A/C system & 24h security access
- Easily sub-dividable floor plan
- 2 secure car space

TENANT:



Daniel Gunning
02 9698 0222

**9/263 Clarence Street,
SYDNEY**



GUNNING



This floor plan is intended as a guide only. Layout dimension are approximate only. No representation or warranties of any nature whatsoever are given or intended. Any person using this information should rely on their own enquiries.