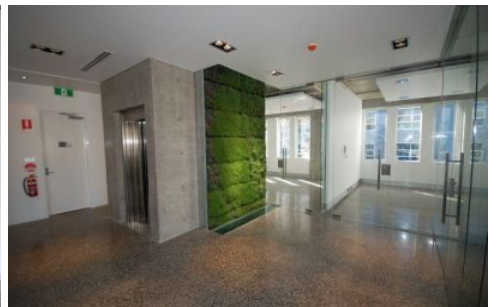


GUNNING



Level 2/441-449 Elizabeth Street Street Surry Hills NSW

Gunning Real Estate is pleased to present to the market CORE - Surry Hills. This near new boutique creative office building in the epicenter of Surry Hills commercial precinct.

This property is strategically located at the busy corner of Elizabeth and Devonshire Streets and is anchored by a variety of food and beverage options including Little Vienna sandwiches and Oporto.

The property also benefits highly from the introduction of the light rail network, with a light rail station earmarked in front of the property, making connectivity a breeze. The building itself is also situated less than 100 meters away from Central Station. This is the perfect location!

441-449 Elizabeth Street is a building of character and is in hot demand from a variety of commercial users.

Building Size : 243 sqm
Land Size : 275 sqm
View : <https://www.gunningre.com.au/lease/nsw/eastern-suburbs/surry-hills/commercial/offices/5731423>