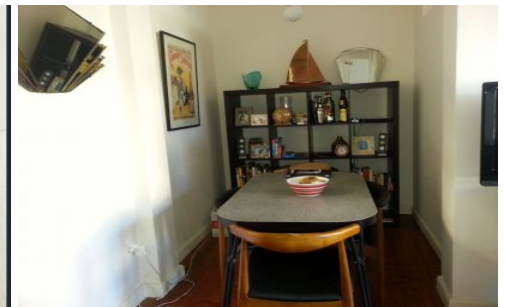


# GUNNING



**19/2 McDonald Street Potts Point NSW**

1 1

"Winchester" is a well-maintained Art Deco block with lovely period features throughout the common areas, including raked brickwork, lantern lights, wood railings and stained glass windows, this apartment offers a spacious living space including separate dining area with an abundance of natural light.

**View :** <https://www.gunningre.com.au/lease/nsw/eastern-suburbs/potts-point/residential/apartment/5731458>

Floorboards  
High ceilings  
Built ins,  
Huge picture windows  
Storage  
Bathroom with bath  
Character filled with plenty of natural light  
Quality fixtures and fittings throughout  
Shared laundry  
Close to Schools

<https://www.gunningre.com.au>  
Just another WordPress site