

GUNNING



Level 2/2-4 Brett Street Revesby NSW

Gunning Real Estate is pleased to present this rare opportunity to secure Entertainment/Leisure space within one of Sydney's premier entertainment destinations in the Revesby Workers Club. With over 70,000 members, the club attracts weekly over 17,800 (ave.) members & visitors and over 22,000 (ave.) customers to Revesby Village Centre. The club also offers a multi story car park for 770 vehicles.

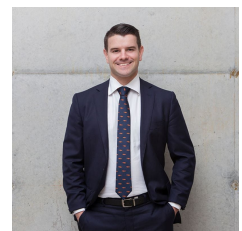
Ideally located across the road from Revesby Train Station, the Club adjoins a small regional shopping centre (Revesby Village Centre) anchored by Coles supermarket as well as an established medical precinct (Brett Street Medical).

Currently fitted & previously operating as a play centre, the space would also be suitable to a wide range of Entertainment & Leisure uses being also situated next to

Building Size : 1195 sqm
View : <https://www.gunningre.com.au/lease/nsw/canterburybankstown/revesby/commercial/leisure/5731480>

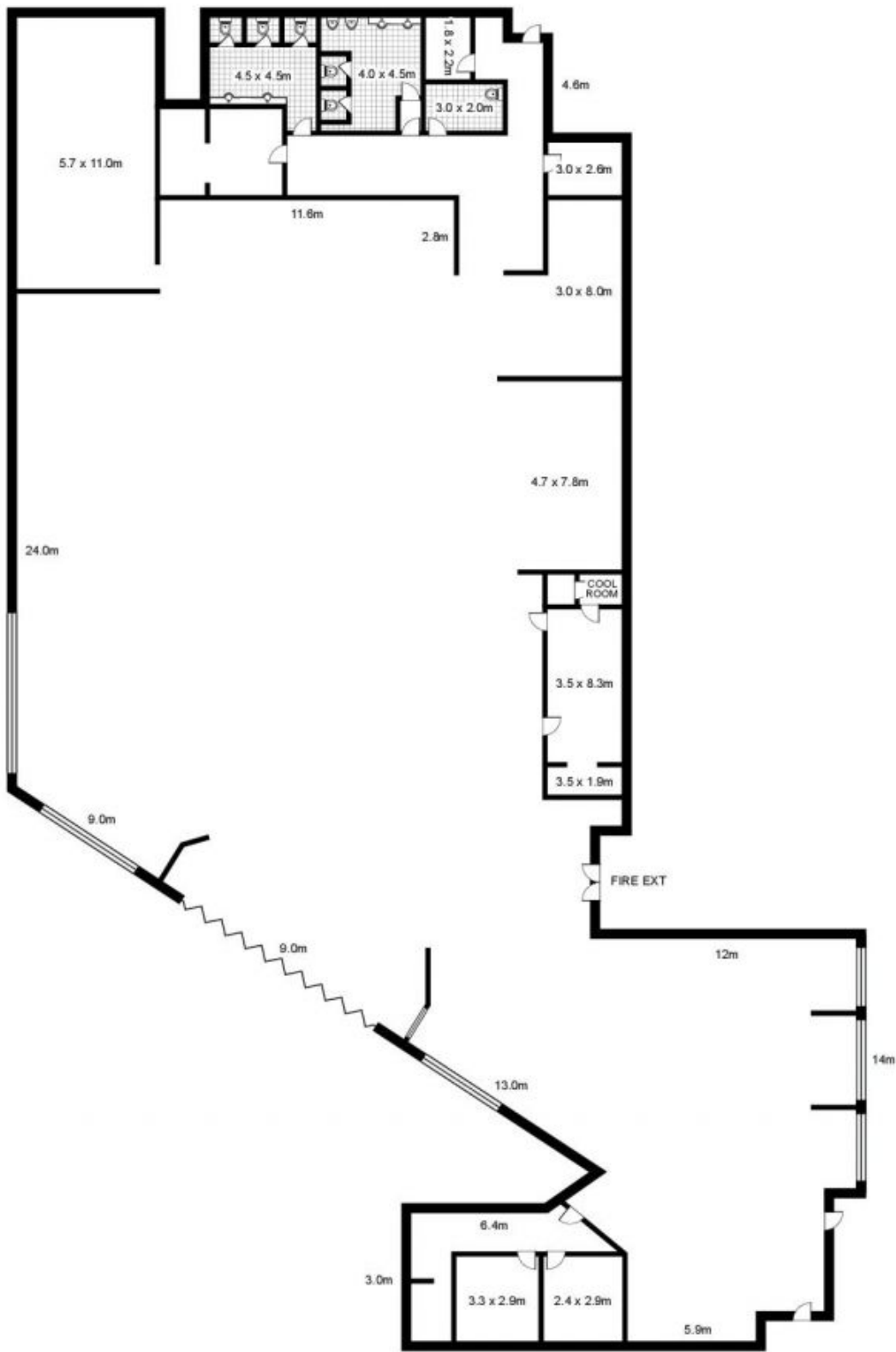


James McKenny
(02) 9310 9208



William Gunning
(02) 9310 9207

**Tenancy 2, Level 2 Revesby Village Centre,
REVESBY**



GUNNING

This floor plan is intended as a guide only. Layout dimension are approximate only. No representation or warranties of any nature whatsoever are given or intended. Any person using this information should rely on their own enquiries.