

GUNNING



418 Crown Street Surry Hills NSW

- 89sqm of internal ground floor retail space
- Tandem car parks for up to 2 vehicles
- Blank canvass, ready for brand new fitout
- Clear space shop
- high pedestrian traffic
- Crown Street's hottest food and beverage precinct.

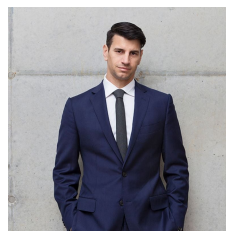
The property is located immediately next door to the recently refurbished and extremely popular Dolphin Hotel and Rapha bicycle cafe and across the road from Bill's, Flour Eggs Water and Crown Street Grocer to name a few.

For further information or to arrange a time to inspect, please feel free to contact the agent;

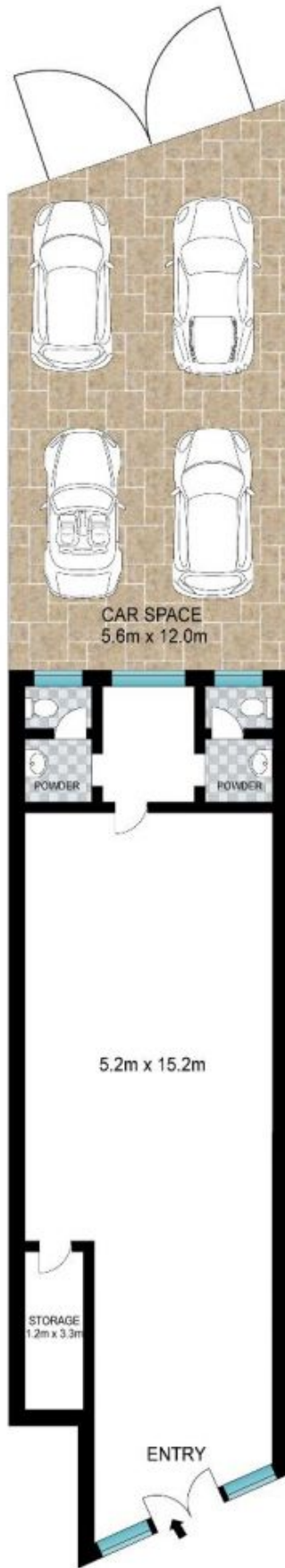
Alberto: 0416 919 423

Daniel: 0413 051 235

Building Size : 89 sqm
View : <https://www.gunningre.com.au/lease/nsw/eastern-suburbs/surry-hills/commercial/retail/5731490>



Daniel Gunning
02 9698 0222



INT: 89 m²
EXT: 61 m²



0 1 2 3 4 5

Scale in metres. Indicative only. Dimensions are approximate. All information contained herein is gathered from sources we believe to be reliable. However we cannot guarantee its accuracy and interested persons should rely on their own enquiries.

418 Crown Street, Surry Hills