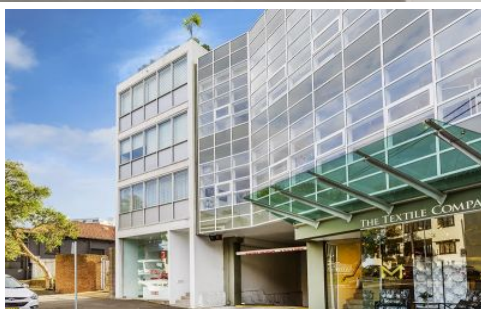
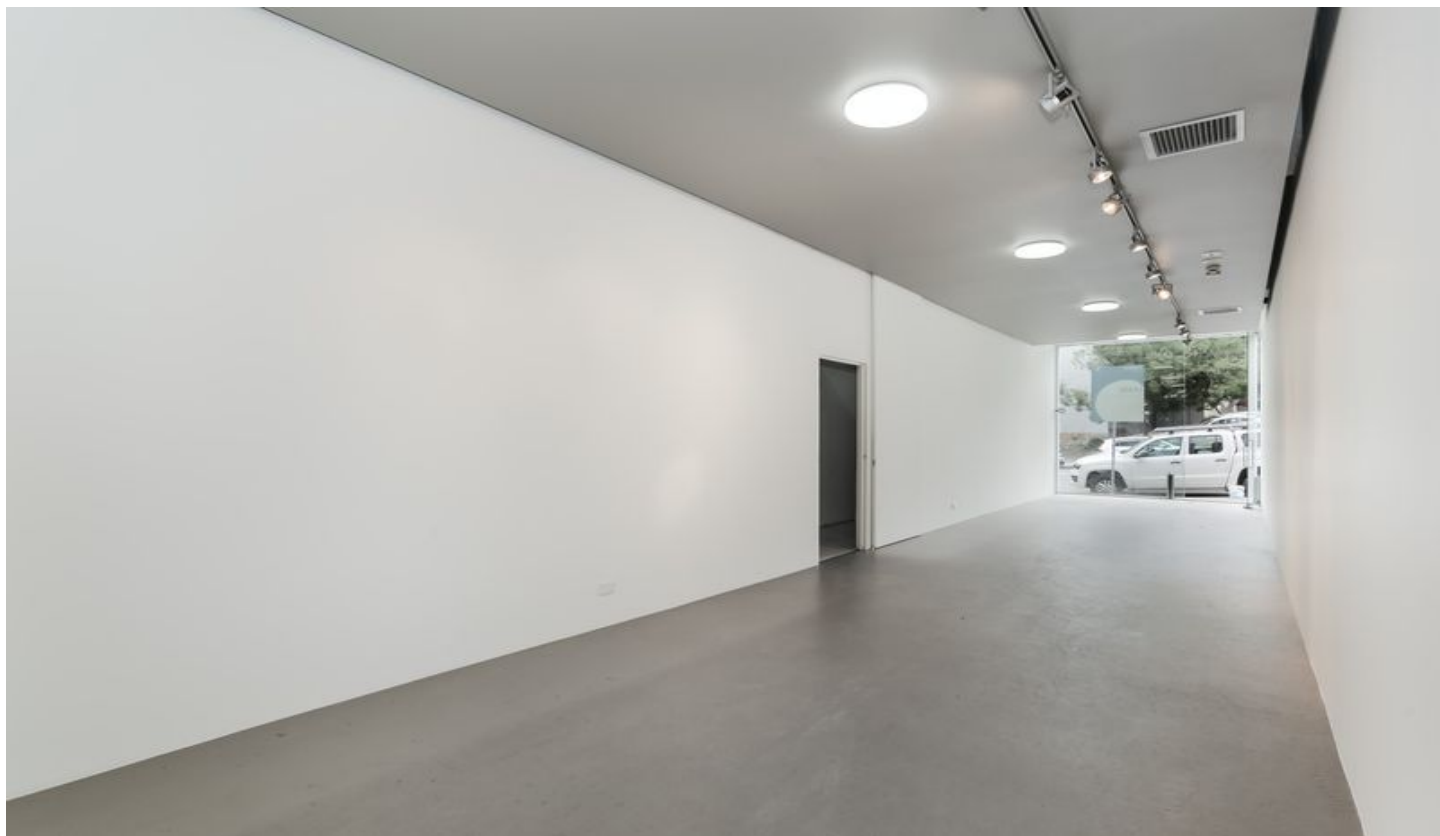


# GUNNING



## 21 Boundary Street Darlinghurst NSW

- 110sqm of NLA (Shop 26m x 3.2m)
- 3.5m wide floor to ceiling glass frontage
- Polished concrete floors & high ceilings
- Expansive wall space for displaying product/merchandise
- Established surrounding retailers
- 1 Secure carspace + 1 Storage cage
- Internal Kitchenette & Toilet

**Building Size** : 110 sqm

**View** : <https://www.gunningre.com.au/lease/nsw/eastern-suburbs/darlinghurst/commercial/retail/5731525>

Suits a variety of Uses & operators (Cafe', Light Food restaurant, Bike Shop, Service Shop/Retailer, Showroom, Real Estate Agency etc..)

Situated among some of Sydney's top furniture, fabric and textile showrooms. 21 Boundary Street is well located at the busy cross roads of Boundary Street and McLachlan Avenue, Darlinghurst.