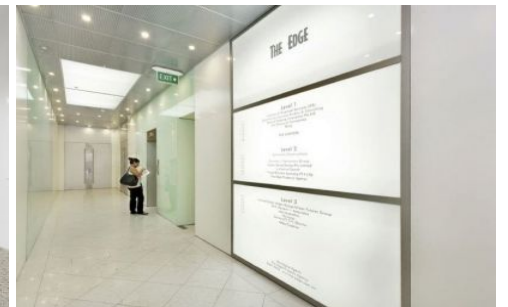
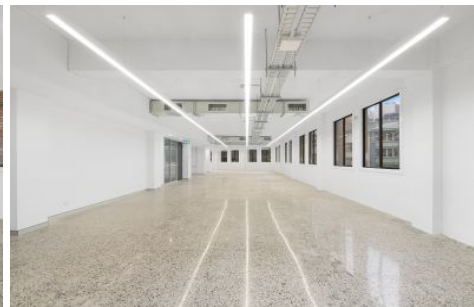


GUNNING



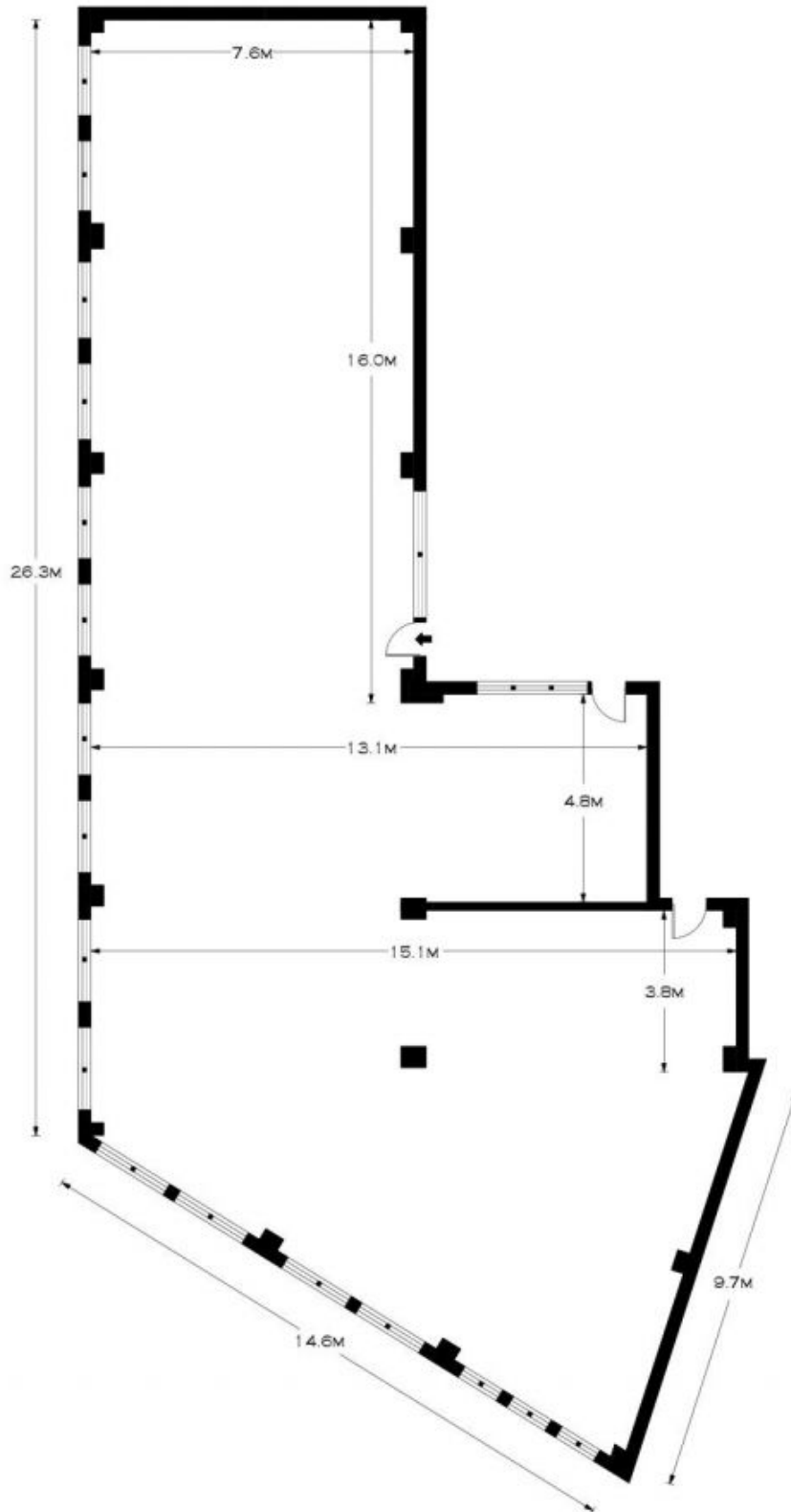
Suites 101/13-15 Wentworth Avenue Surry Hills NSW

- 140 to 326 sqm open plan on Level 1
- Abundant natural light
- Polished concrete floors & exposed ceilings
- Upgraded Lobby
- Upgraded M & F amenities with shower
- EOT facilities
- 750m from Town Hall and 300m from Museum Stations
- secure parking available at additional cost

Building Size : 140 sqm
View : <https://www.gunningre.com.au/lease/nsw/eastern-suburbs/surry-hills/commercial/offices/5731527>

Prominently positioned on the corner of Wentworth Avenue and Liverpool Streets this newly refurbished creative tenancy provides an excellent opportunity for tenants to take advantage of this popular city fringe location.

13-15 Wentworth Avenue is surrounded by excellent cafes, wine bars and restaurants such as Chin Chin, Harpoon Harry's, Paramount Coffee Project and Butter. The property



LEVEL ONE



SCALE (METRES)

PLANS SHOWN ONLY INDICATIVE OF LAYOUT. DIMENSIONS ARE APPROXIMATE.
 Floor plans by www.remaustralia.com
 Ref. No: 12886



INT : 326M²

SUITE 1.1/13-15 WENTWORTH AVENUE

SURRY HILLS