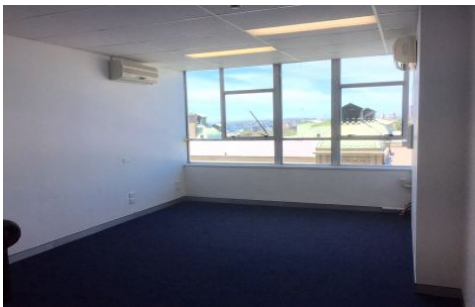


GUNNING



Level 6/2b/229 Macquarie Street Sydney NSW

- 26sqm on Level 6
- East facing with excellent natural light
- Water connection and A/C
- Popular commercial building with 2 lifts
- Superb CBD location near Martin Place
- Minutes to Wynyard and Circular Quay
- Close to Hyde Park and St James Station
- Exclusive and prestigious address
- New flooring to be installed

Building Size : 26 sqm
Land Size : 26 sqm
View : <https://www.gunningre.com.au/lease/nsw/sydney-city/sydney/commercial/health-care/5731529>

This commercial suite is located in the William Bland Centre at 229-231 Macquarie Street, Sydney in the heart of Sydney's primary medical, legal and financial precinct.

Martin Place, St James Station, Hyde Park, the Botanical Gardens and the Supreme Courts are only minutes away, making this space ideal for professionals such as health

