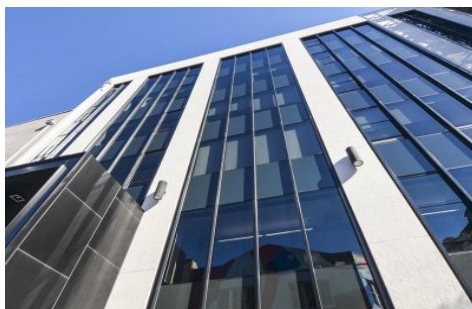


GUNNING



Level 1/1.01/79 Commonwealth Street Surry Hills NSW

Located in undoubtedly, one of Surry Hills finest commercial locations, 79 Commonwealth Street is situated in the epicenter of the thriving creative precinct. Located immediately next door to both Long Grain and Chin Chin restaurants and across the road from Paramount Coffee Project, this central location is on the door step to the CBD and central railway, making it the ideal boutique commercial office space.

Key features include;

- 106 sqm of NLA
- Immaculate presentation
- Premium grade building
- Great natural light
- Direct lift access

Building Size : 106 sqm

View : <https://www.gunningre.com.au/lease/nsw/eastern-suburbs/surry-hills/commercial/offices/5731535>