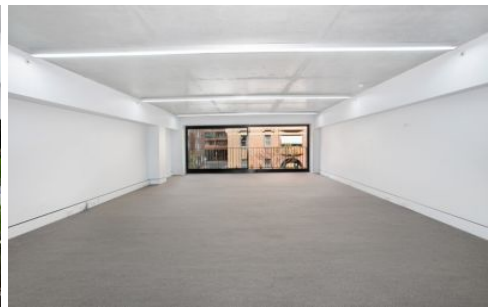


GUNNING



1.10/46A Macleay Street Potts Point NSW

- 66sqm on Level 1
- Flooded with natural light with outlook to Greenknowe Ave
- High end finishes & self-contained amenities (kitchenette & toilet)
- Comfortable and practical work space, fits up to 8 workstations
- 5 minute walk to Kings Cross Train Station
- Substantial parking facilities in close proximity
- 1 year Lease Assignment or New direct Lease

Building Size : 66 sqm
Land Size : 66 sqm
View : <https://www.gunningre.com.au/lease/nsw/eastern-suburbs/potts-point/commercial/offices/5731596>

Located at undoubtedly one of Potts Point's most exclusive addresses, 46a Macleay Street sits proudly on the corner of Greenknowe and Macleay Streets surrounded by designer boutiques, cafes, restaurants and bars, making it one very desirable business address.

For further information or to arrange a time to inspect

<https://www.gunningre.com.au>
Just another WordPress site