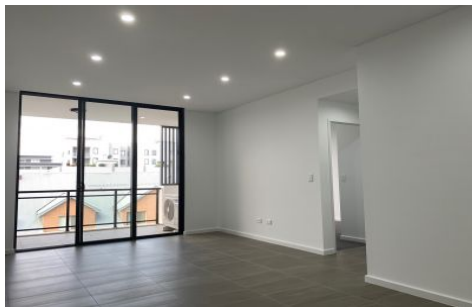
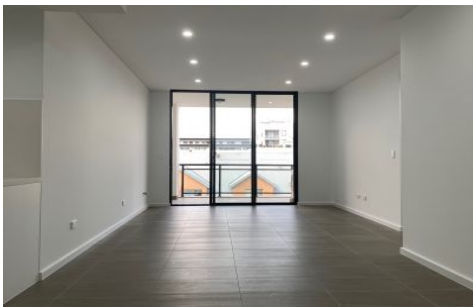


GUNNING



405/43-45 Loftus Crescent Homebush NSW

2 2 1

Brand new secure complex, nestled in a great central location. Situated only moments away from Homebush train station & Bus stops (approx. 8 minute stroll), reputable schools, tertiary institutions, medical facilities, Parklands and local shops. Centrally located between the City & Parramatta CBD via M4 Motorway.

View : <https://www.gunningre.com.au/lease/nsw/inner-west/homebush/residential/apartment/5731681>

Property Features:

- One generously sized bedroom with built-in wardrobe and carpeted flooring
- Spaciously sized tiled Nursery or study with balcony access
- Kitchen boasting a stone bench top, stainless steel appliances, dishwasher & gas cooking
- Ducted system conditioning to lounge & LED downlights



Hong Bao
02 9310 9219