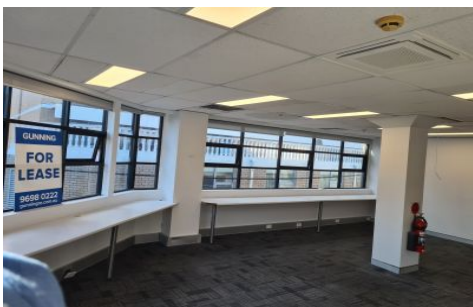


# GUNNING



## Suite 201/15 Belvoir Street Surry Hills NSW

\*\*\*UNDER OFFER\*\*\*

Open plan layout, area 55sqm approximately

- Large windows, good natural light
- Air conditioned
- Male & female toilets
- Access to shower
- Close to Central Station
- Walking distance to shops, cafes and parks.
- Available Now

This office can be combined with another adjoining Suite to create a 102sqm Office.

Car parking in basement available at \$60 per week.

**Building Size** : 55 sqm

**View** : <https://www.gunningre.com.au/lease/nsw/eastern-suburbs/surry-hills/commercial/offices/5731718>



**Tushar Bakshi**  
02 9698 0222



**Daniel Gunning**  
02 9698 0222