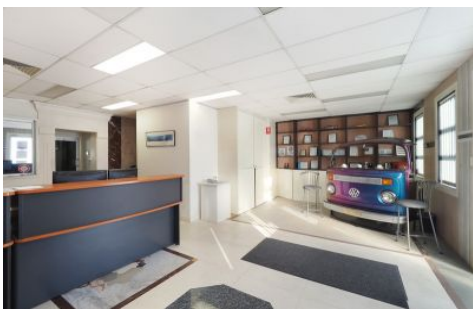


GUNNING



43 Perry Street Matraville NSW

Gunning Real Estate is pleased to present this industrial warehouse situated on the street front of Perry Street and the warehouse is accessible via the side driveway. The property also features a modern & recently renovated office space, complete with reception, board room, toilet, kitchen/lunchroom & is fully air conditioned with several split systems installed.

The side driveway can not only provide access to the warehouse but can also be used for yard space or car parking. The property is only minutes away for the Airport and Port Botany.

KEY FEATURES

- Building area: 208qm*
- Office area: 133sqm*
- Warehouse: 75sqm

Building Size : 208 sqm
Land Size : 790 sqm
View : <https://www.gunningre.com.au/lease/nsw/eastern-suburbs/matraville/commercial/industrial/6163280>



William Gunning
(02) 9310 9207