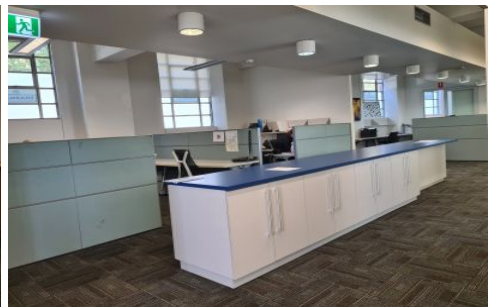
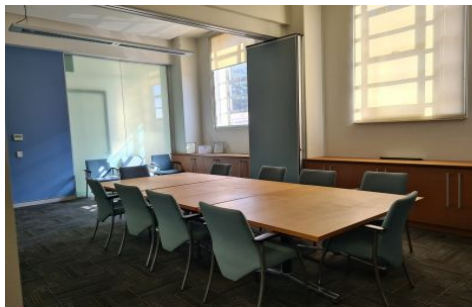
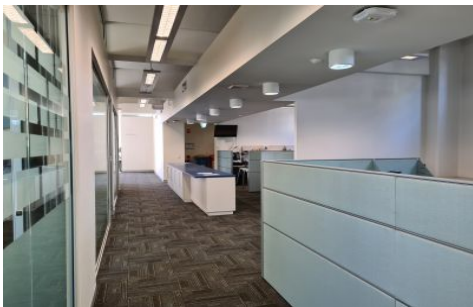


# GUNNING



## Level GF/287 New South Head Road Edgecliff NSW

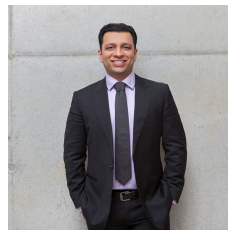
Ground floor office on the main road to the Eastern Suburbs on the corner of New South Head Road, Ocean Street and Edgecliff Road.

- Ground floor, easy access
- Area 280sqm approximately
- Air conditioned
- Good natural light
- Partitioned
- High ceilings
- Separate boardroom, kitchenette
- Male & female amenities
- Secure parking for 4-5 vehicles

The subject building is surrounded by Double Bay's caf  , shops and retail.

Transport – Close to Edgecliff bus and train station,

**Price** : Contact Agent  
**Building Size** : 280 sqm  
**View** : <https://www.gunningre.com.au/lease/nsw/eastern-suburbs/edgecliff/commercial/offices/6457210>



**Tushar Bakshi**  
**(02) 9310 9209**