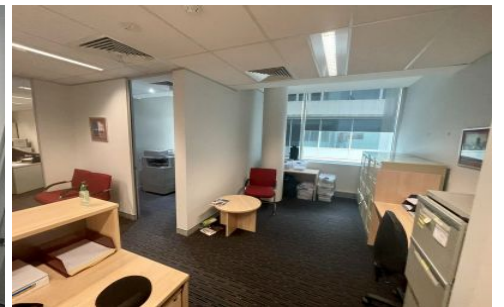
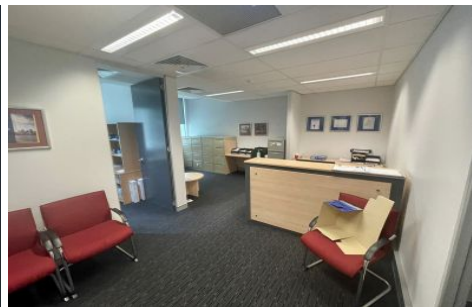


GUNNING



Level 6/Suite 164/10 Park Road Hurstville NSW

2 

Gunning Real Estate is pleased to present this commercial suite with existing partitions in a modern office building.

The building is located next door to Westfield and is within close proximity to Hurstville railway station and major bus interchange. The building has 3 pedestrian street entrances from Park Road, Humphreys Lane and The Avenue. A council car park for 108 public spaces is accessible via The Avenue entrance.

The suite features a reception area, a board room, a partitioned office, and a spacious open-plan work area with own internal kitchenette.

The building also has a shared kitchenette and shared male & female toilets on each level.

Building Size : 114 sqm
View : <https://www.gunningre.com.au/lease/nsw/st-george/hurstville/commercial/offices/6498987>



William Wu
02 9698 0222



James McKenny
(02) 9310 9208