

GUNNING



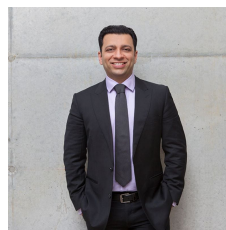
275 Goulburn Street Surry Hills NSW

Located near the corner of Crown and Goulburn Street's retail precinct, this location will suit a retailer, lifestyle or commercial operator who wants exposure amongst some of Sydney's best independent brands and companies.

- Freehold retail terrace
- Rear courtyard area
- Suits fashion, retail, hair dresser, commercial, hospitality (STCA) uses
- Also, available for lease is the adjoining terrace 273 Goulburn St. Can be leased together to form a larger site.

Note: Advertised area is an approximate

Building Size : 125 sqm
Land Size : 125 sqm
View : <https://www.gunningre.com.au/lease/nsw/eastern-suburbs/surry-hills/commercial/retail/6841503>



Tushar Bakshi
02 9698 0222



Daniel Gunning
02 9698 0222