

GUNNING



277 Goulburn Street Surry Hills NSW

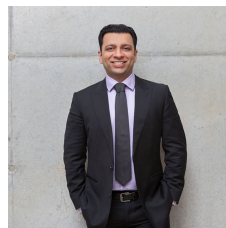
Strategically located on the corner of Crown and Goulburn Street:

Features:

- Lower ground level, area 191sqm approximately
- Bar & kitchen area, existing coolroom
- Male & female amenities
- Excellent location with street exposure
- Close proximity to Oxford Street and restaurants
- Suitable for a wide range of uses (STCA) including hospitality

For more information or to inspect, please contact the agents.

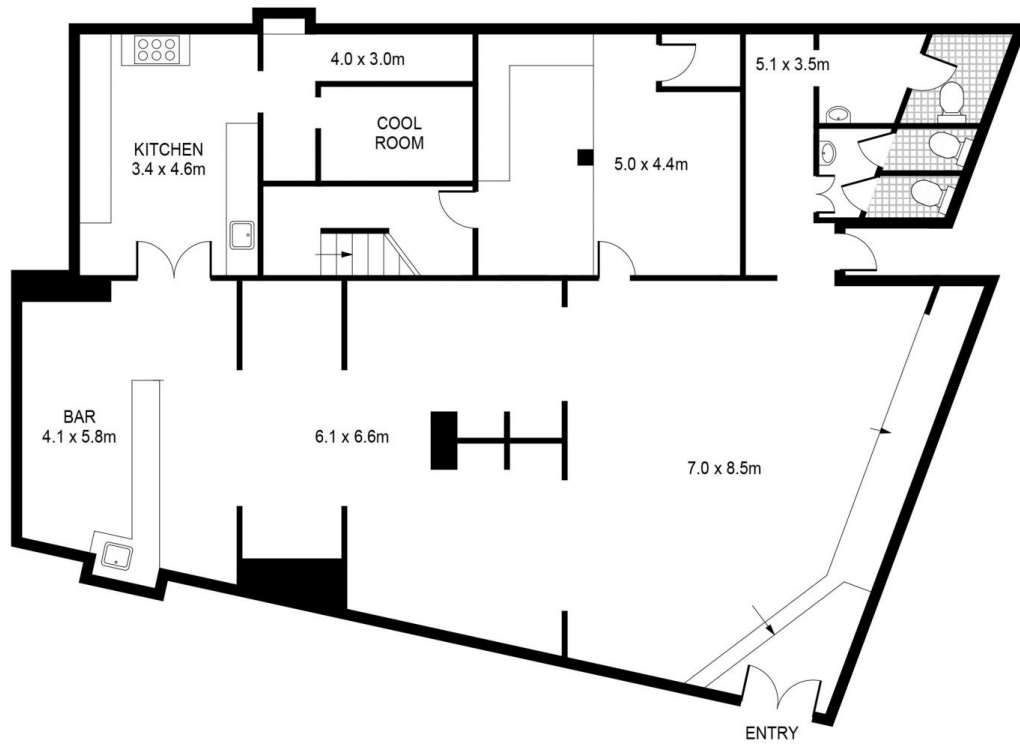
Price : Contact Agents
Building Size : 191 sqm
Land Size : 191 sqm
View : <https://www.gunningre.com.au/lease/nsw/eastern-suburbs/surry-hills/commercial/retail/6841581>



Tushar Bakshi
(02) 9310 9209



Daniel Gunning
(02) 9310 9204



277 Goulburn Street SURRY HILLS

GUNNING

PLANS SHOWN ONLY INDICATIVE OF LAYOUT. DIMENSIONS ARE APPROXIMATE.