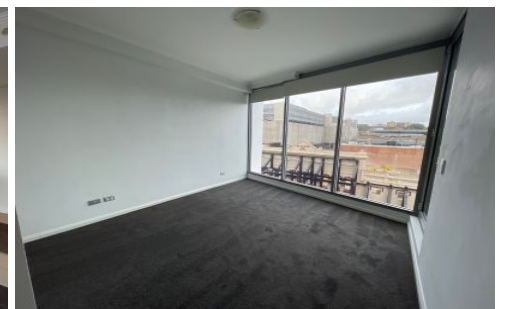


# GUNNING



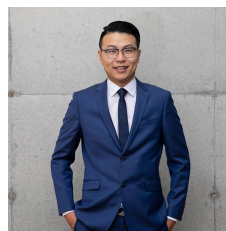
## 413/33 Bronte Road Bondi Junction NSW

1 1 1

Bathed in all day northerly sunlight, this sleek designer apartment offers a perfect blend of standout convenience and resort-style living in the heart of Bondi Junction. Set in the landmark Genoa building, footsteps to Westfield's retail hub, this oversized one-bedroom apartment features level lift access to secure parking and a rooftop pool with sun terrace. It's an easy stroll to world-class shopping, dining and entertainment with easy access to the city and beaches.

- Brand new carpet
- Prestige building designed by PTW and SJB Architects
- Streamlined interiors, quality finishes and an airy open feel
- Glass-fronted living opens to a full-length entertainer's terrace
- Modern gas kitchen, integrated stainless steel appliances

**View :** <https://www.gunningre.com.au/lease/nsw/eastern-suburbs/bondi-junction/residential/apartment/6931586>



**Hong Bao**  
02 9310 9219