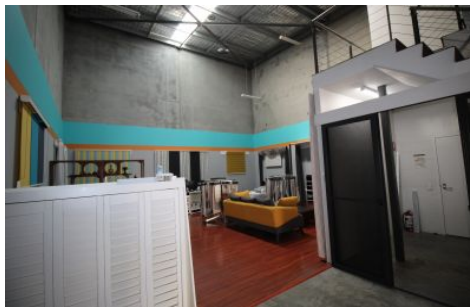


GUNNING



14/105a Vanessa Street Kingsgrove NSW

Gunning Real Estate is pleased to present this warehouse and office unit.

This modern Industrial unit is located in the highly popular Gateway Business Park. Which is located only 700m to M5 on off ramps and Kingsgrove Road shops.

This Office & Warehouse has good internal clearance, open plan office with good natural light. All together makes a Stylish design industrial suite.

The complex has its own on site cafe, wide driveways with container access.

Property Features

- # Available from July 2022
- # 175sqm warehouse & office
- # 6.5m internal clearance

Building Size : 175 sqm

View

: <https://www.gunningre.com.au/lease/nsw/st-george/kingsgrove/commercial/industrial/6984283>



William Gunning
(02) 9310 9207