

# GUNNING



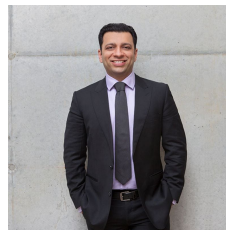
## 1.10/46A Macleay Street Potts Point NSW

- 66sqm on Level 1
- Flooded with natural light with outlook to Greenknowe Ave
- High end finishes & self-contained amenities (kitchenette & toilet)
- Comfortable and practical work space, fits up to 8 workstations
- Lift access
- 5 minute walk to Kings Cross Train Station
- Substantial parking facilities in close proximity

Leased to a substantial business until 2024.

Located at one of Potts Point's most exclusive addresses, 46a Macleay Street sits proudly on the corner of Greenknowe and Macleay Streets surrounded by designer boutiques, cafes, restaurants and bars, making it one very desirable business address.

**Building Size** : 66 sqm  
**Land Size** : 66 sqm  
**View** : <https://www.gunningre.com.au/sale/nsw/eastern-suburbs/potts-point/commercial/offices/7083215>



**Tushar Bakshi**  
02 9698 0222



**Daniel Gunning**  
02 9698 0222