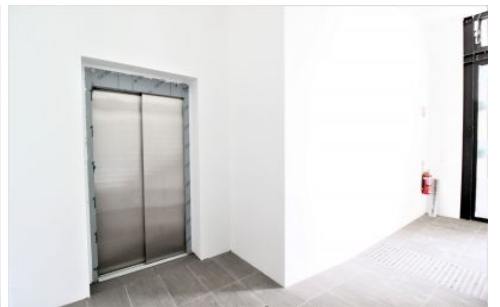
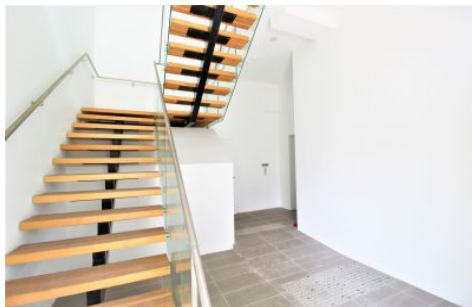


GUNNING



Suite 202/13-17 Lachlan Street Waterloo NSW

Gunning Real Estate is pleased to present this brand-new office suite in the heart of Waterloo with ground floor entrance and own internal lift connecting between ground floor and first floor where the main office section is.

The property is conveniently located within minutes' walk from Green Square train station, East Village Shopping Centre, Meriton Waterloo retail precinct, Moore Park light rail station, and Entertainment Quarter.

Ground floor: Glass frontage, storage room under the stairs, own internal lift that goes up to first floor, and staircase with contemporary design.

First floor: Windows throughout the suite, brand new office fitout, lift access + stairs access, ducted air-conditioning, own internal kitchenette, spacious office space, own

Building Size : 141 sqm
View : <https://www.gunningre.com.au/lease/nsw/eastern-suburbs/waterloo/commercial/offices/7254804>



William Wu
02 9698 0222



Hong Bao
02 9310 9219