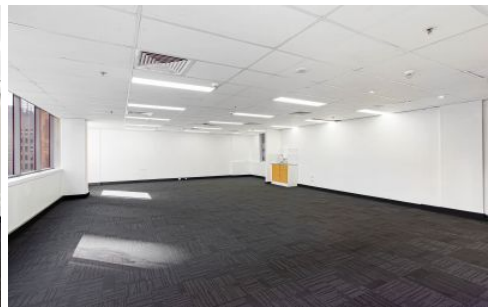
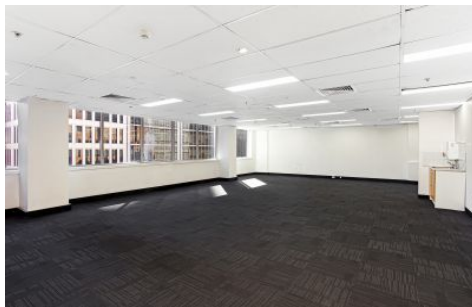


GUNNING



Level 14/Suite 67/88 Pitt Street Sydney NSW

1 🚗

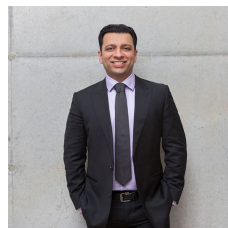
- Area 94sqm approximately
- Recently refurbished with new carpet and freshly painted
- Level 14 with exceptional natural light and area views
- Multiple car parking options nearby
- Ducted air conditioning system
- Premier building with two lifts
- Availability for 1 car space within the building (additional cost)
- Close proximity to Martin Place, Wynyard Station and Circular Quay

Lease term, 1 year minimum preferred (flexible).

Incentives offered with rent free

Located in the heart of the CBD, 88 Pitt Street provides an excellent boutique office space with the convenience of

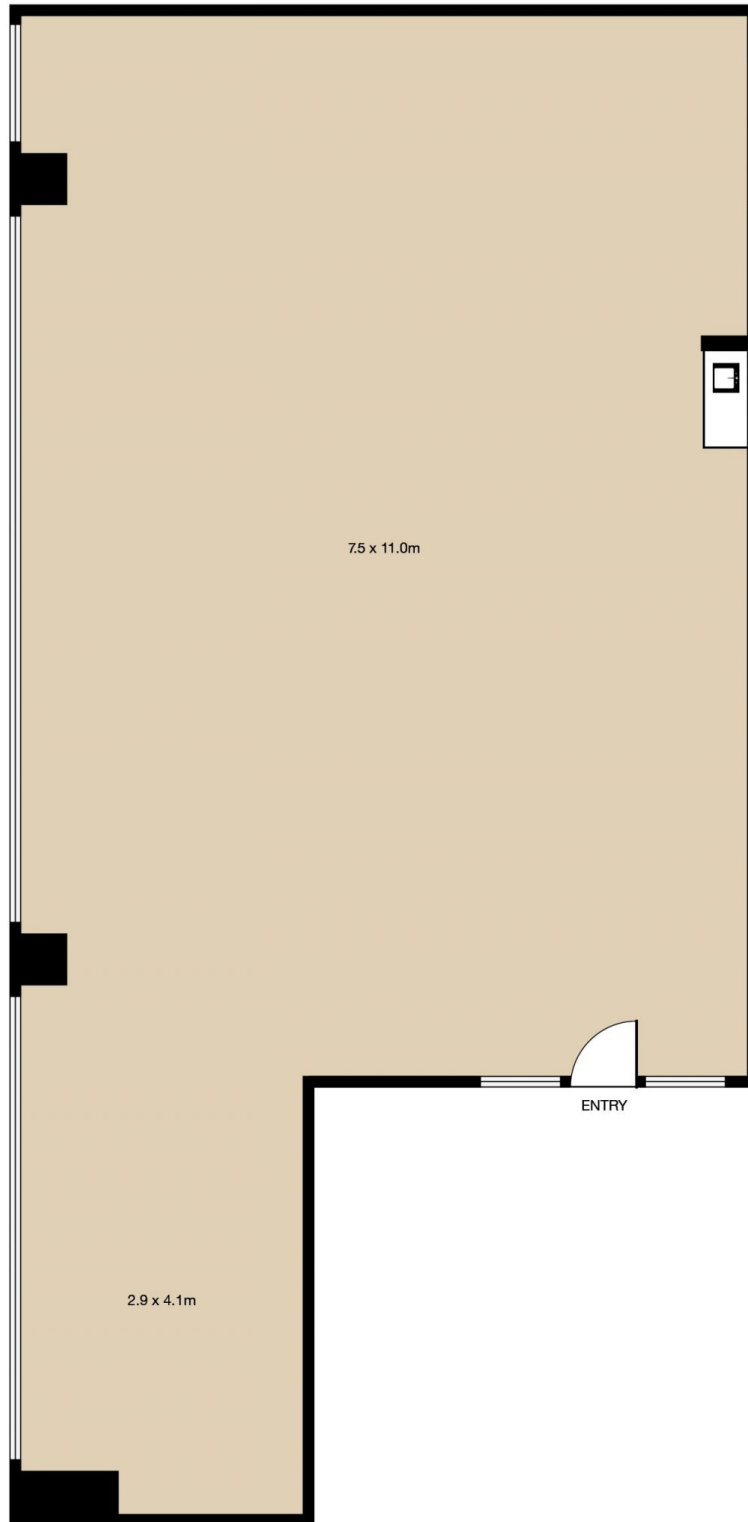
Price : Reasonable rent
Building Size : 94 sqm
View : <https://www.gunningre.com.au/lease/nsw/sydney-city/sydney/commercial/offices/7333335>



Tushar Bakshi
02 9698 0222



Malcolm Gunning
(02) 9310 9211



Suite 67, Level 14, 88 Pitt Street, SYDNEY

Total Area : 94m²

This floor plan is intended as a guide only. Layout dimensions are approximate only. No representations or warranties of any nature whatsoever are given or intended. Any person using this information should rely on their own enquiries. Floor plans by Josef Geranio Studio; info@josefgeranio.com

GUNNING