

GUNNING



655 Botany Road Roseberry NSW

2 

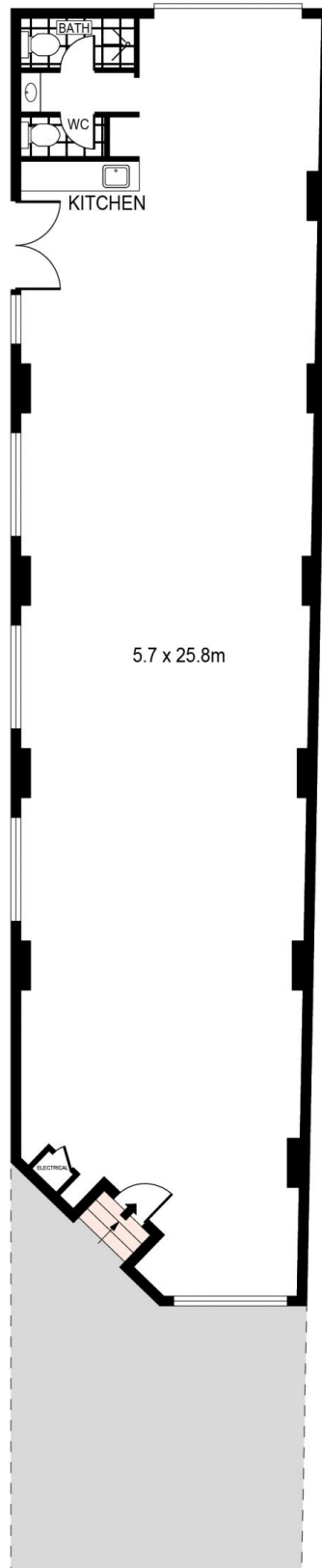
- Loft Style 164 sqm occupying a coveted corner position with an expansive frontage on bustling Botany Road and Cressy Street.
- High quality premium finishes including brand new streamlined kitchenette designed with a corian benchtop, freshly polished concrete floors, newly installed aluminium window framing and exposed timber beams and trusses.
- New his and her bathroom with polished chrome Caroma fixtures and shower facilities accentuated by glistening terrazzo cinder tiles
- Access from Emanuel Lane with automatic roller shutter door and loading area
- 2 car parking spaces

For further information or to inspect please contact the Agent.

Price : \$84,000 plus GST plus Outgoings
Building Size : 164 sqm
View : <https://www.gunningre.com.au/lease/nsw/northern-rivers/roseberry/commercial/retail/7565625>



Tushar Bakshi
02 9698 0222



SCALE (METRES)

PLANS SHOWN ONLY INDICATIVE OF LAYOUT. DIMENSIONS ARE APPROXIMATE.
Ref. No: 99935



655 BOTANY ROAD

ROSEBERY