

GUNNING



Level GF/G02/15 Belvoir Street Surry Hills NSW

2 🚗

Gunning Real Estate are pleased to offer for lease this ground floor retail / office and other office Suites 50-200sqm in the heart of Surry Hills.

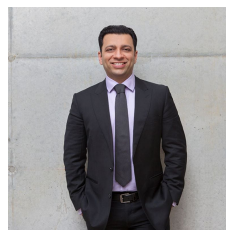
Recently refurbished building near busy Cleveland and Elizabeth Streets.

Located approximately 400m from Sydney major transportation hub, the property is surrounded by terrific local cafes, bars and all business amenities and Prince Alfred Park & Pool.

Area:
50-200sqm approx.+ parking available

Features include:
- North facing, great natural light throughout

Building Size : 200 sqm
View : <https://www.gunningre.com.au/lease/nsw/eastern-suburbs/surry-hills/commercial/offices/7620479>



Tushar Bakshi
02 9698 0222



Daniel Gunning
02 9698 0222