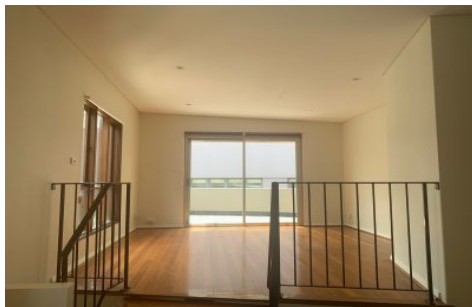
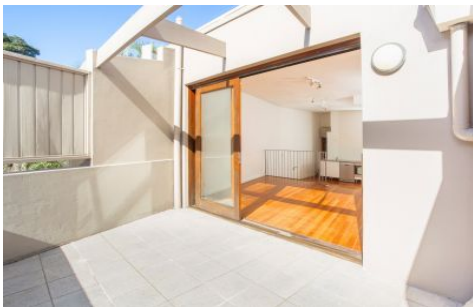


GUNNING



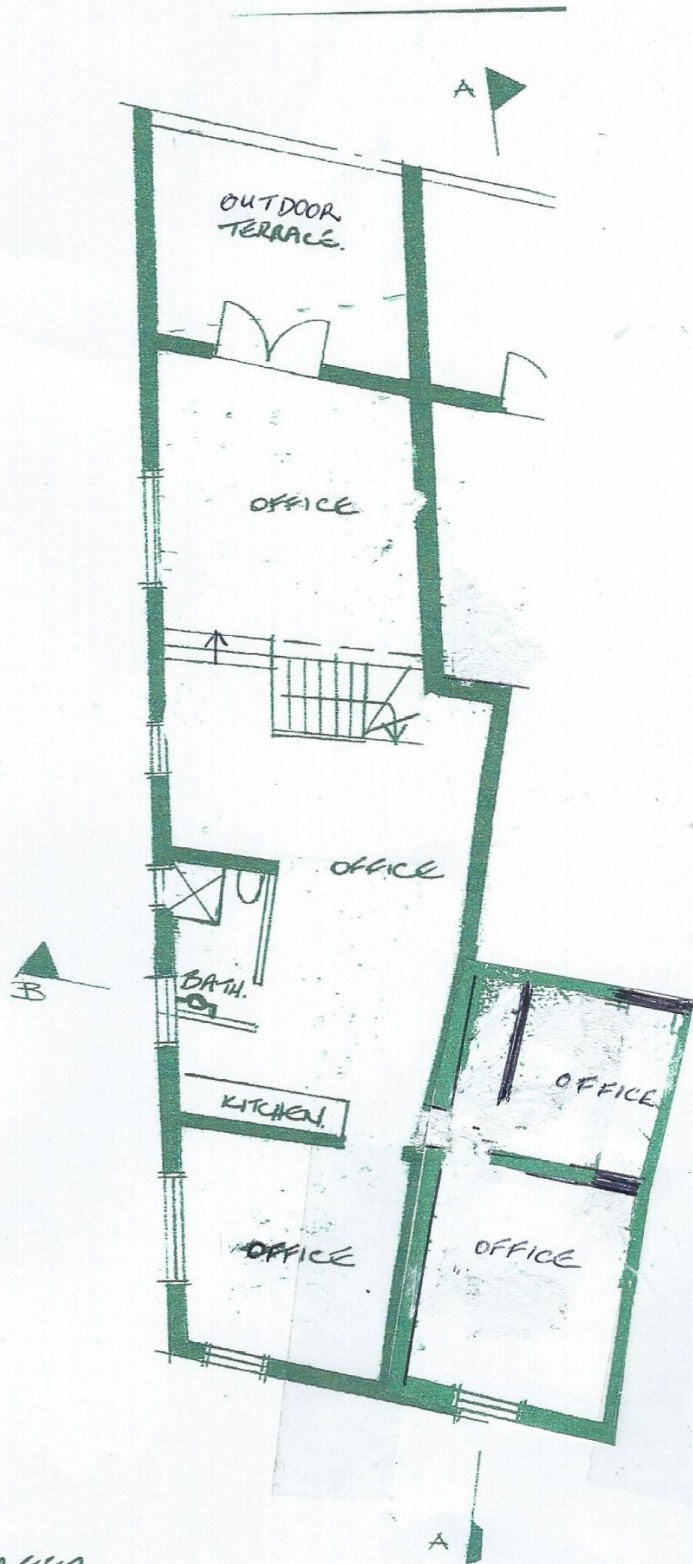
1/2 Farnell Street Surry Hills NSW

Open Living / dining / work area
Entertainment area with balcony
3 separate rooms
Modern kitchen
Bathroom
Air conditioner
Laundry / utility room
Great natural light
Excellent location, close to restaurant, shops & cafes.

Building Size : 120 sqm
View : <https://www.gunningre.com.au/lease/nsw/eastern-suburbs/surry-hills/commercial/offices/7631140>



Tushar Bakshi
02 9698 0222



1/2 FARWELL STREET
SUMMIT HILLS