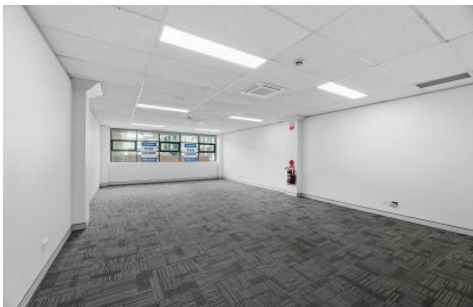


# GUNNING



## Suite 202/15 Belvoir Street Surry Hills NSW

Open plan office

- Area 47sqm approx.
- Good natural light
- Air conditioned
- Male & female toilets
- Access to shower
- Close to Central Station
- Available Now

**Building Size** : 47 sqm

**View** : <https://www.gunningre.com.au/lease/nsw/eastern-suburbs/surry-hills/commercial/offices/7667709>



**Tushar Bakshi**  
02 9698 0222