

# GUNNING



## Level 3/301/88 Foveaux Street Surry Hills NSW

Gunning Real Estate is pleased to present this quality office space in the heart of Surry Hills.

88 Foveaux Street, Surry Hills is located approximately 200 metres from Central Station. The building has been refurbished and is serviced by 2 new high speed elevators. Easy access to public transport (Central Bus and Train Stations), Light rail, restaurants and cafes.

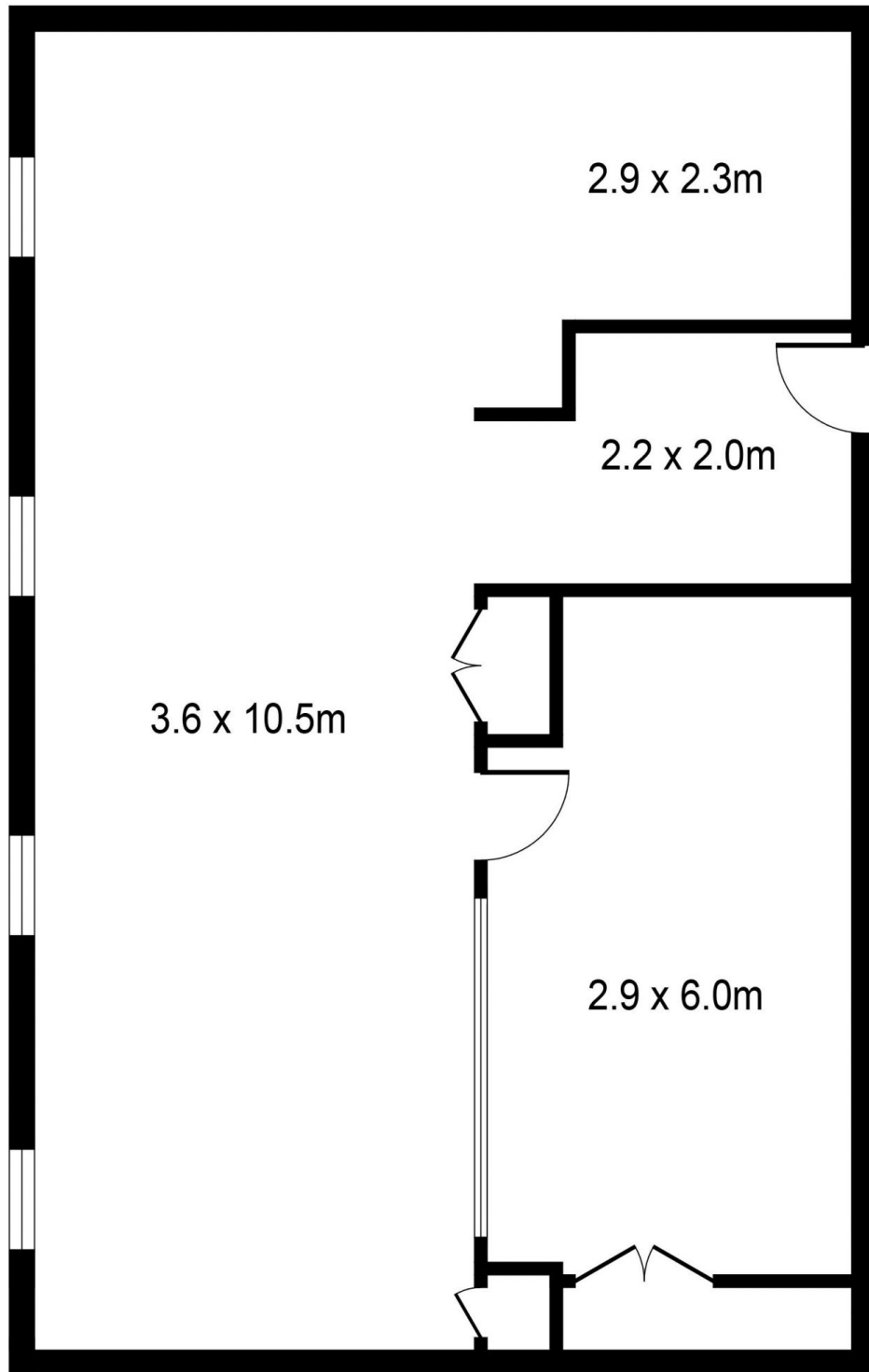
The office features:

- 70sqm on Level 3
- Reception area + meeting room + open plan
- Large windows providing good natural light
- Storage cupboards
- Common male & female amenities
- Common kitchenette

**Price** : Contact Agents  
**Building Size** : 70 sqm  
**View** : <https://www.gunningre.com.au/lease/nsw/eastern-suburbs/surry-hills/commercial/offices/7695763>



**Tushar Bakshi**  
02 9698 0222



TOTAL AREA: 70 SQM

Suite 301/88 Foveaux Street  
**SURRY HILLS**

**GUNNING**

PLANS SHOWN ONLY INDICATIVE OF LAYOUT. DIMENSIONS ARE APPROXIMATE.